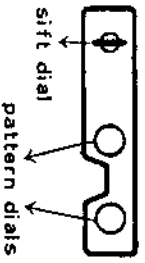






## A MANUAL FOR PATTERN CARDS

<p><b>CON. COLOR</b>—contrasting color yarn</p> <p><b>KNITTING YARN</b></p> <p><b>Y. F.</b>—yarn feeder</p> <p><b>P. Y.</b>—pass-over yarn</p> <p>Blank</p>	<p>Alternate contrasting color with main yarn from (1) to (2) as designated on the pattern card.</p>
<p><b>PATTERN PANEL</b></p>  <p>sift dial</p> <p>pattern dials</p>	<p>This is the yarn threaded through the yarn feeder.</p> <p>This is the yarn to be passed over the latch needles pulled out to C position.</p> <p>This is to set yarn at rest.</p> <p>The shift dial has four figures with the mark <math>\alpha</math> from 1 to 4 and three figures with the mark <math>\epsilon</math> from 1 to 3, with the mark 0 in the center of the dial face. The shift dial should be adjusted to the figures as directed by the mark <math>\alpha</math> or <math>\epsilon</math></p> <p>Two pattern dials are set on the pattern panel. The left pattern dial should be adjusted to the figure below the left pattern dial, and vice versa.</p>
<p><b>CAM LEV.</b>—cam lever</p> 	<p>In case of pattern knitting, the cam lever may be adjusted to one of the five positions pick L stockinet, R, or knit-in.</p>
<p><b>PUSH BUTTONS</b></p>  <p>left</p> <p>right</p> <p>OFF OFF</p>	<p>The mark <math>\blacksquare</math> shows the push button being pressed down. So press the push button on the mark <math>\blacksquare</math>. In case this mark is not provided, push the off button.</p>
<p><b>PATTERN LEV.</b></p>  <p>— pattern lever</p>	<p>The pattern lever has three marks. Adjust the angle of the pattern lever <math>\square</math> to these marks respectively.</p>
<p><b># ROWS DIR.</b></p> <p>— number of rows and direction</p> <p><b>SIDE LEV.</b></p> <p>— side lever</p>	<p>The arrow (<math>\leftarrow</math> or <math>\rightarrow</math>) mark shows the knitting direction and the number of rows knitted.</p> <p>In case of pattern knitting, the side lever is set to V. If so indicated in the pattern card the side lever is also set to <math>\bullet</math></p>
 <p>0</p>	<p>Needles are not in use at the position O and are rested in A position. The position 0 is used to adjust to the position of 0 in the needle bed. In case the position 0 is not provided.</p>

ORDER	CON. COLOR	PATTERN PANEL		CAM LEV.	PUSH BUTTONS		PATTERN LEV.	ROWS DIR.
		↓	○	●	2 1	1 2	LEV.	DIR.
1	A	○	●	4	STOCKI-NET		●	←
2	B	"	"	"			"	→
3	"	"	"	"			"	→
4	A	2	"	"			"	←
5	"	"	"	"			"	→
6	B	○	"	"			"	←
7	"	"	"	"			"	→

A=Light blue B=Green

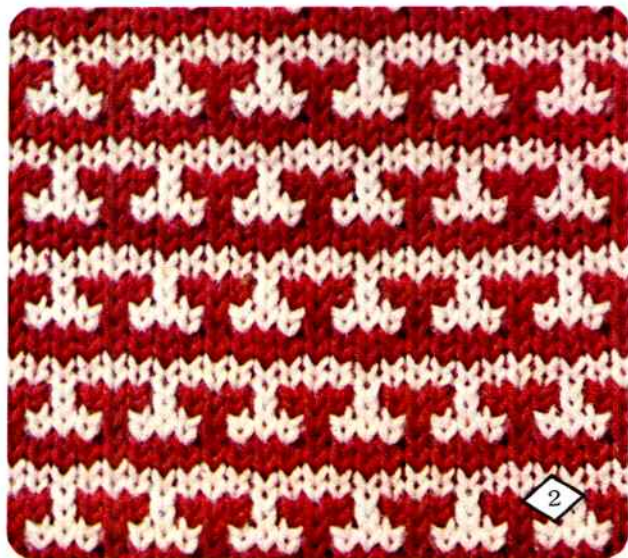
(1 pattern consists of 4 stitches and 12 rows.)



ORDER	CON. COLOR	PATTERN PANEL		CAM LEV.	PUSH BUTTONS		PATTERN LEV.	ROWS DIR.
		↓	○	●	2 1	1 2	LEV.	DIR.
1	A	○	●	4	STOCKI-NET		●	←
2	"	"	"	"			"	→
3	B	2	"	"			"	←
4	"	"	"	"			"	→
5	A	"	"	"			"	→
6	B	"	"	"			"	←

A=White B=Brick color

(1 pattern consists of 4 stitches and 8 rows.)

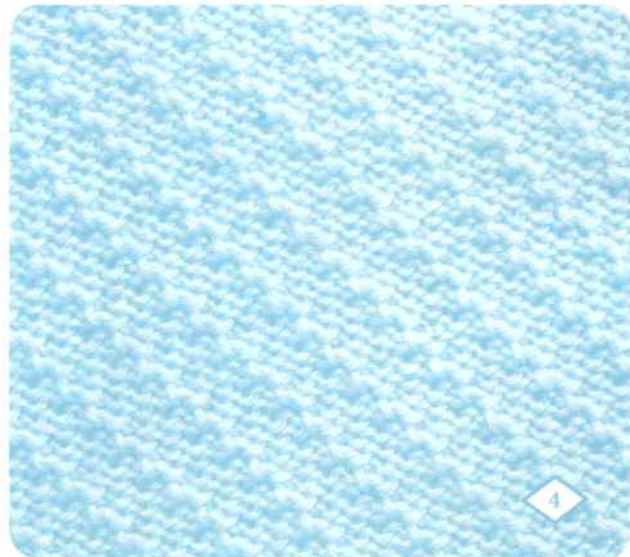
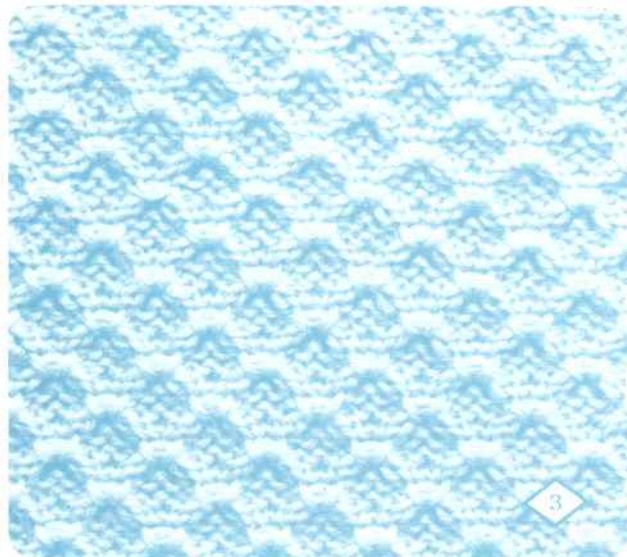


ORDER	PATTERN PANEL	CAM LEV.	PUSH BUTTONS	PATTERN LEV	ROWS DIR
	1		2 1 1	1 1 2	
1	0	4	STITCH 1		
2					
3	2 1 1				
4					

1 pattern consists of 4 stitches and 8 rows

ORDER	PATTERN PANEL	CAM LEV.	PUSH BUTTONS	PATTERN LEV	ROWS DIR
	1		2 1 1	1 1 2	
1	0	7	STITCH 1		
2					
3	1 1 1				
4					
5	2 1 1				
6					

1 pattern consists of 6 stitches and 6 rows



ORDER	CON. COLOR	PATTERN PANEL	CAM LEV.	PUSH BUTTONS	PATTERN LEV.	ROWS DIR.
1	A		4			
2	B	"	"	"	"	
3	"	"	"	"	"	
4	A		"	"	"	
5	B	"	"	"	"	
6	"	"	"	"	"	

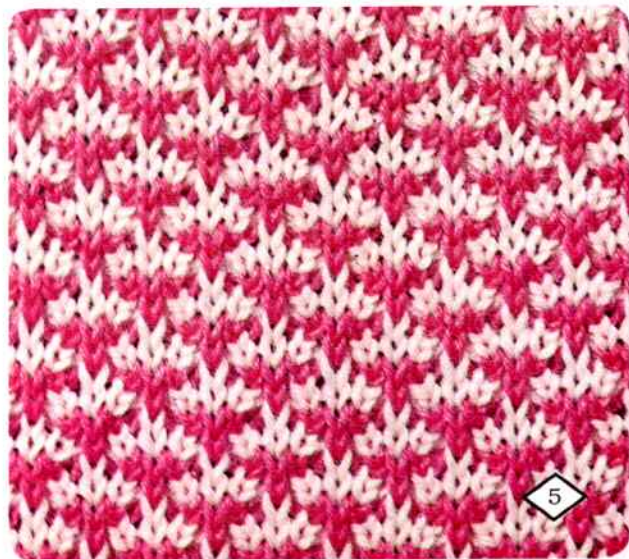
A=Cream color B=Pink

(1 pattern consists of 4 stitches and 8 rows)

ORDER	CON. COLOR	PATTERN PANEL	CAM LEV.	PUSH BUTTONS	PATTERN LEV.	ROWS DIR.
1	A		4			
2	"	"	"	"	"	
3	"		"	"	"	
4	"	"	"	"	"	
5	B	"	"	"	"	
6	"	"	"	"	"	
7	"		"	"	"	
8	"	"	"	"	"	

A=Blue B=White

(1 pattern consists of 4 stitches and 8 rows)



ORDER	PATTERN PANEL	CAM LEV	PUSH BUTTONS	PATTERN LEV	ROWS DIR
1	1% 1	2	2 1	1 2	←
2					→
3	3% 1				←
4					→
5	1% 1				←
6					→
7					←
8					→
9					←
10	3% 1				→
11					←
12	1% 1				→
13					←
14					→

1 pattern consists of 4 stitches and 9 rows.



ORDER	PATTERN PANEL	CAM LEV	PUSH BUTTONS	PATTERN LEV	ROWS DIR
1	0	4	2 1	1 2	←
2					→
3	1% 1				←
4					→
5	2% 1				←
6					→
7	3% 1				←
8					→
9	4% 1				←
10					→
11	3% 1				←
12					→
13	2% 1				←
14					→
15	1% 1				←
16					→

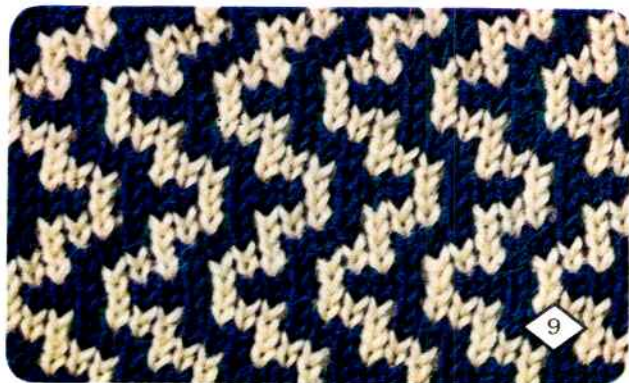
1 pattern consists of 4 stitches and 16 rows.



ORDER	CON. COLOR	PATTERN PANEL			CAM LEV.	PUSH BUTTONS		PATTERN LEV.	ROWS DIR.
1	A	0	•	4	STOCKI-NET				←
2	"	"	"	"	"				→
3	B	1		"	"				←
4	"	"	"	"	"				→
5	A	2		"	"				←
6	"	"	"	"	"				→
7	B	3		"	"				←
8	"	"	"	"	"				→
9	A	4		"	"				←
10	"	"	"	"	"				→
11	B	3		"	"				←
12	"	"	"	"	"				→
13	A	2		"	"				←
14	"	"	"	"	"				→
15	B	1		"	"				←
16	"	"	"	"	"				→

A = Navy blue B = Cream color

(1 pattern consists of 4 stitches and 16 rows.)



ORDER	CON. COLOR	PATTERN PANEL			CAM LEV.	PUSH BUTTONS		PATTERN LEV.	ROWS DIR.
1	A	0	7	•	STOCKI-NET				←
2	"	"	"	"	"				→
3	B	1		"	"				←
4	"	"	"	"	"				→
5	A	2		"	"				←
6	"	"	"	"	"				→
7	B	3		"	"				←
8	"	"	"	"	"				→
9	A	2		"	"				←
10	"	"	"	"	"				→
11	B	1		"	"				←
12	"	"	"	"	"				→

A = Brownish gold B = White

(1 pattern consists of 6 stitches and 12 rows.)



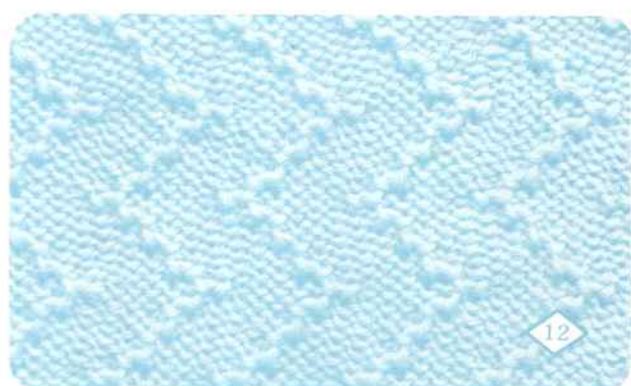
ORDER	PATTERN PANEL	CAM LEV	PUSH BUTTONS	PATTERN LEV	ROWS DIR
	1		2 1 1	1 2	
1	4 1 1 6	0			←
2					→
3	3 1 1				←
4					→
5	2 1 1				←
6					→
7	1 1 1				←
8					→
9	0				←
10					→
11	1 1 1				←
12					→

Pattern consists of 6 stitches and 12 rows.



ORDER	PATTERN PANEL	CAM LEV	PUSH BUTTONS	PATTERN LEV	ROWS DIR
	1		2 1 1	1 2	
1	4 1 1 6	0			←
2					→
3	3 1 1				←
4					→
5	2 1 1				←
6					→
7	1 1 1				←
8					→
9	0				←
10					→
11	1 1 1				←
12					→
13	2 1 1				←
14					→
15	3 1 1				←
16					→

Pattern consists of 6 stitches and 16 rows.



ORDER	CON. COLOR	PATTERN PANEL		CAM LEV.	PUSH BUTTONS		PATTERN LEV.	± ROWS DIR.
		↓	○	●	2 1	1 2	↓	
1	A	4	6	●	STOCKI-NET		●	←
2	"	"	"	"			"	→
3	B	3	"	"			"	←
4	"	"	"	"			"	→
5	C	2	"	"			"	←
6	"	"	"	"			"	→
7	A	1	"	"			"	←
8	"	"	"	"			"	→
9	B	0	"	"			"	←
10	"	"	"	"			"	→
11	C	1	"	"			"	←
12	"	"	"	"			"	→

A = White B = Blown C = Yellow

(1 pattern consists of 6 stitches and 12 rows.)



ORDER	CON. COLOR	PATTERN PANEL		CAM LEV.	PUSH BUTTONS		PATTERN LEV.	± ROWS DIR.
		↓	○	●	2 1	1 2	↓	
1	A	3	8	3	PICK		PICK	←
2	B	"	"	"	STOCKI-NET		"	→
3	A	2	"	"	PICK		"	←
4	B	"	"	"	STOCKI-NET		"	→
5	A	1	"	"	PICK		"	←
6	B	"	"	"	STOCKI-NET		"	→
7	A	0	"	"	PICK		"	←
8	B	"	"	"	STOCKI-NET		"	→
9	A	1	"	"	PICK		"	←
10	B	"	"	"	STOCKI-NET		"	→
11	A	2	"	"	PICK		"	←
12	B	"	"	"	STOCKI-NET		"	→
13	A	3	"	"	PICK		"	←
14	B	"	"	"	STOCKI-NET		"	→
15	A	4	"	"	PICK		"	←
16	B	"	"	"	STOCKI-NET		"	→

A = White B = Green

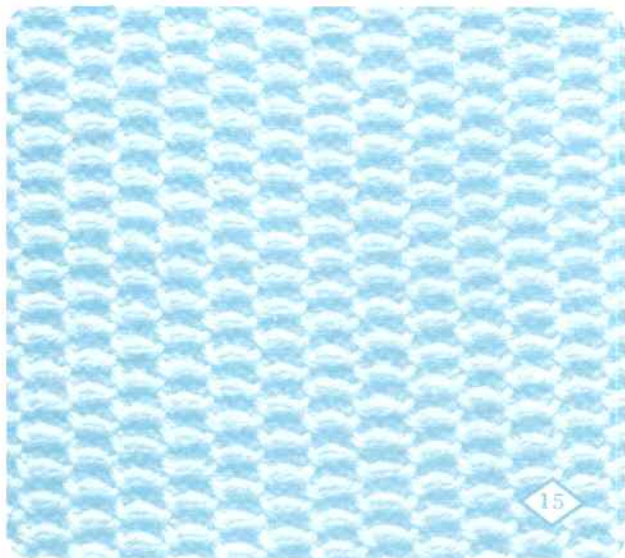
(1 pattern consists of 8 stitches and 28 rows.)





ORDER	PATTERN PANEL	CAM LEV	PUSH BUTTONS	PATTERN LEV	=ROWS DIR
1	0	2			←
2					→
3	2				←
4					→

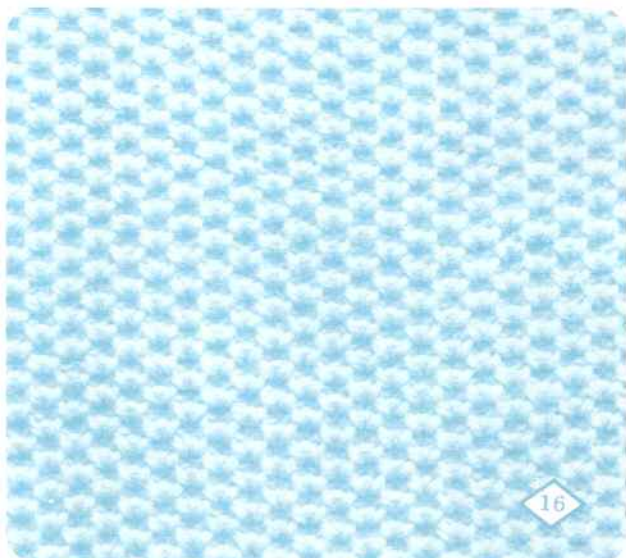
(L pattern consists of 4 stitches and 4 rows)



15

ORDER	PATTERN PANEL	CAM LEV	PUSH BUTTONS	PATTERN LEV	=ROWS DIR
1	0	2	PICK		↔
2	2				

(L pattern consists of 2 stitches and 4 rows)

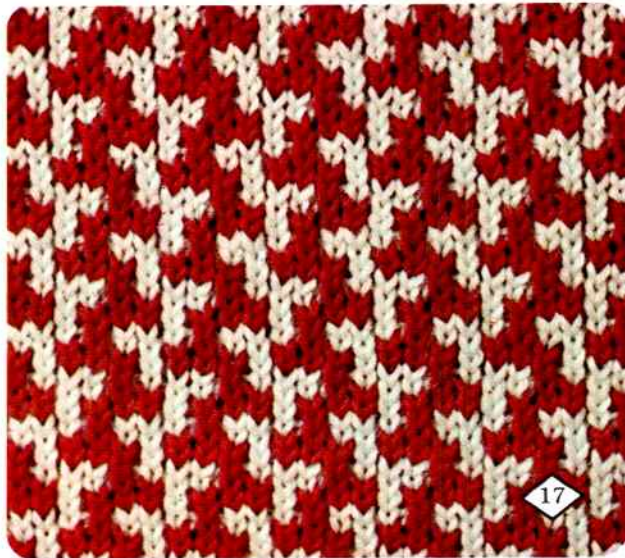


16

ORDER	CON. COLOR	PATTERN PANEL			CAM LEV.	PUSH BUTTONS		PATTERN LEV.	± ROWS DIR.
1	A	0	•	3	PICK			PICK	
2	B	1		"	"	"	"	"	"
3	A	3		"	"	"	"	"	"
4	B	2		"	"	"	"	"	"

A = White B = Red

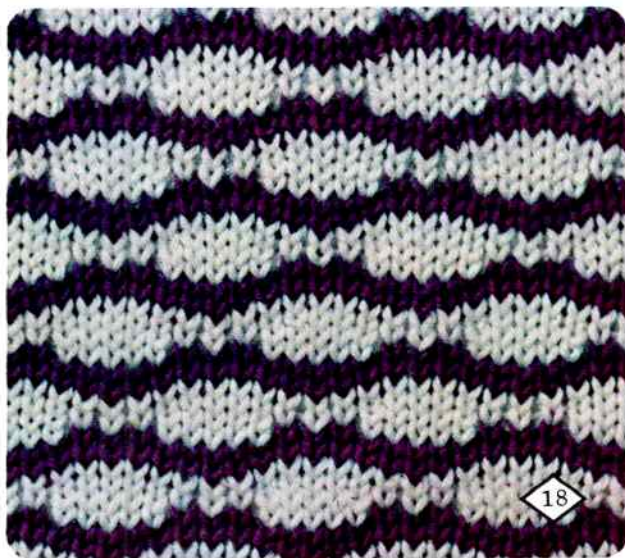
(1 pattern consists of 4 stitches and 8 rows.)



ORDER	CON. COLOR	PATTERN PANEL			CAM LEV.	PUSH BUTTONS		PATTERN LEV.	± ROWS DIR.	
1	A	2		8	1	PICK			PICK	
2	"	1		"	3	"	"	"	"	
3	B	"	"	"	"	STOCKI-NET	"	"	"	
4	A		2	"	1	PICK	"	"	"	
5	"		3	"	3	"	"	"	"	
6	B	"	"	"	"	STOCKI-NET	"	"	"	

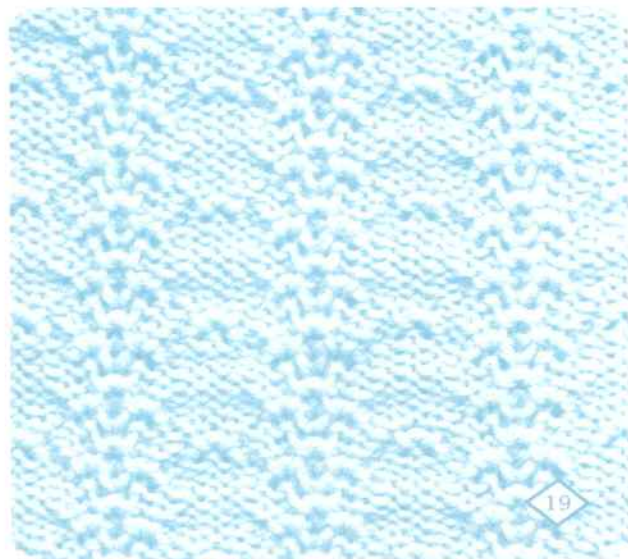
A = White B = Purple

(1 pattern consists of 8 stitches and 12 rows.)



ORDER	PATTERN PANEL			CAM LEV	PUSH BUTTONS		PATTERN LEV	CROWS
	1	2	3		1	2	1/2	D/R
1	0	8	1	PICK	■	■	PICK	≡
2	1	1	3	STOCK	■	■		≡
3	0	8	1	PICK	■	■		≡
4	1	1	3	STOCK	■	■		≡
5	0	8	1	PICK	■	■		≡
6	1	1	3	STOCK	■	■		≡

1 pattern consists of 8 stitches and 10 rows



ORDER	PATTERN PANEL			CAM LEV	PUSH BUTTONS		PATTERN LEV	CROWS
	1	2	3		1	2	1/2	D/R
1	1	2	8	3	PICK	■	■	PICK
2	2	1						≡
								≡
								≡
								≡
								≡

1 pattern consists of 8 stitches and 6 rows



ORDER	CON.	PATTERN PANEL			CAM LEV.	PUSH BUTTONS		PATTERN LEV.	ROWS
	COLOR	↓	○	○	○	21	12	↓	DIR.
1	A	1	8	3	PICK			PICK	↔
2	B	2	"	1	"	"	"	"	"
3	A	3	•	3	"	"	"	"	"
4	B	2	8	1	"	"	"	"	"
5	A	3	"	3	"	"	"	"	"
6	B	1	"	"	"	"	"	"	"
7	A	2	"	1	"	"	"	"	"
8	B	3	•	3	"	"	"	"	"
9	A	2	8	1	"	"	"	"	"
10	B	3	"	3	"	"	"	"	"

A = Cream color B = Blownish gold

(1 pattern consists of 8 stitches and 20 rows.)

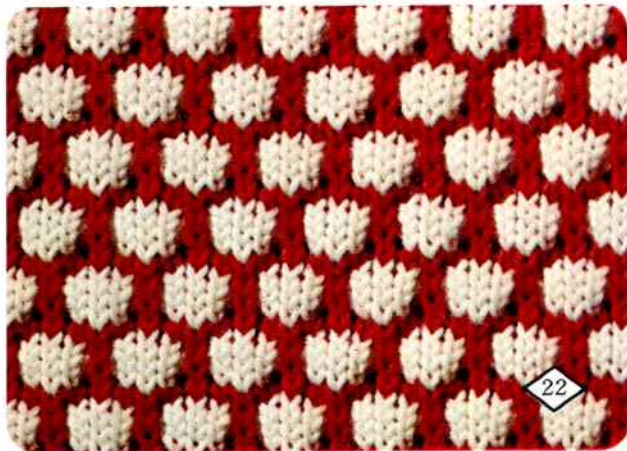


21

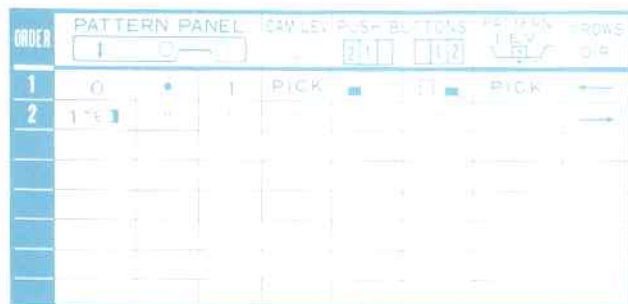
ORDER	CON.	PATTERN PANEL			CAM LEV.	PUSH BUTTONS		PATTERN LEV.	ROWS
	COLOR	↓	○	○	○	21	12	↓	DIR.
1	A	0	•	3	PICK			PICK	≡≡≡
2	B	"	"	"	STOCKI-NET	"	"	"	≡≡≡
3	A	2	"	"	PICK	"	"	"	≡≡≡
4	B	"	"	"	STOCKI-NET	"	"	"	≡≡≡

A = White B = Red

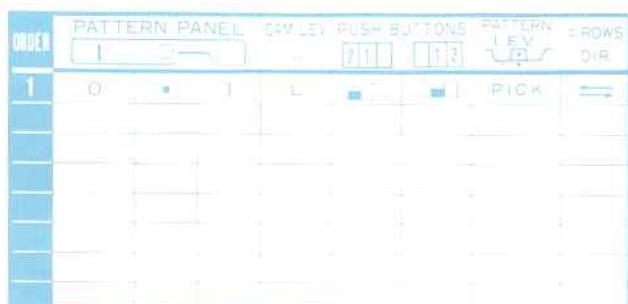
(1 pattern consists of 4 stitches and 12 rows.)



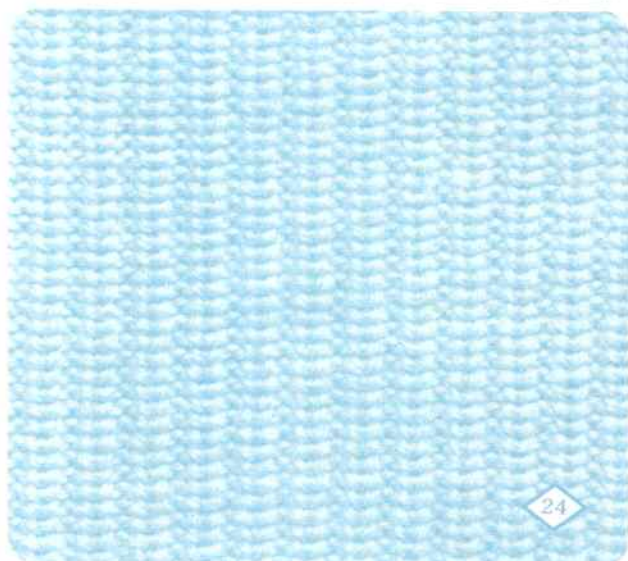
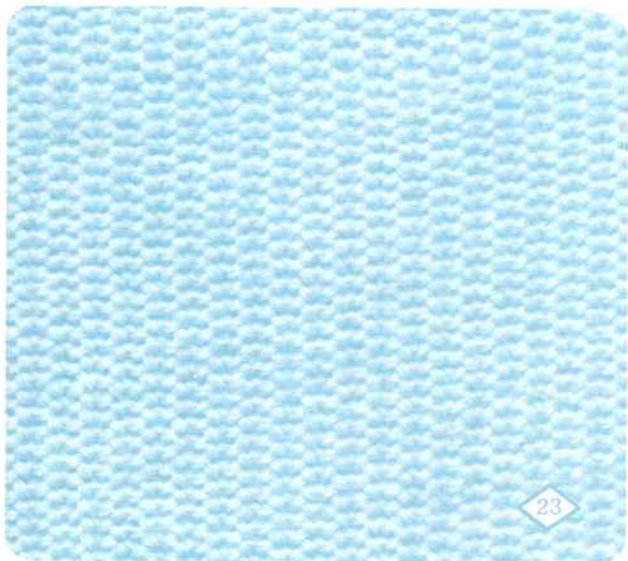
22



pattern consists of 2 inches and 2 rows



pattern consists of 2 inches and 2 rows



ORDER	CON. COLOR	PATTERN PANEL			CAM LEV.	PUSH BUTTONS		PATTERN LEV.	± ROWS DIR.
1	A	3	8	3	PICK			PICK	
2	B	2	"	1	"	"	"	"	"
3	A	1	"	3	"	"	"	"	"
4	B	2	"	1	"	"	"	"	"

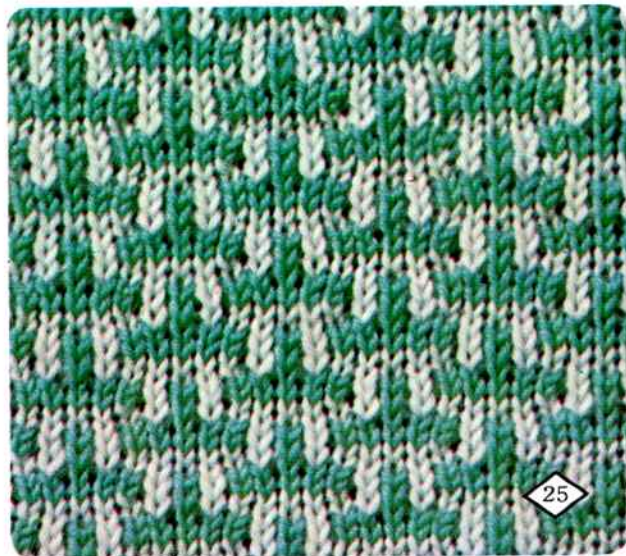
A = Green B = White

(1 pattern consists of 8 stitches and 8 rows.)

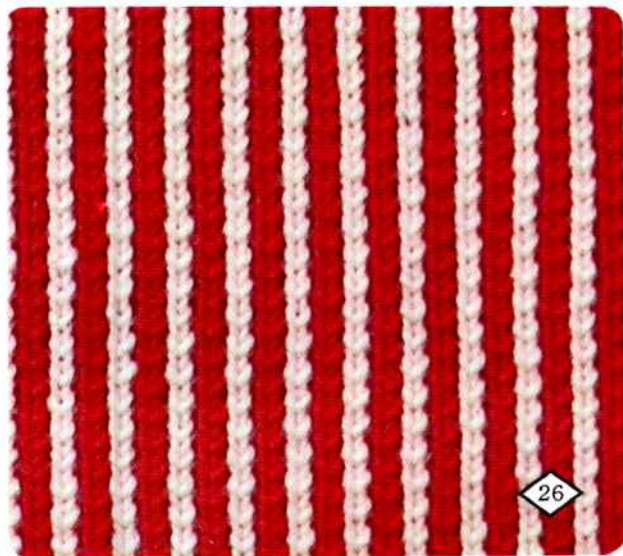
ORDER	CON. COLOR	PATTERN PANEL			CAM LEV.	PUSH BUTTONS		PATTERN LEV.	± ROWS DIR.
1	A	0	•	1	PICK			PICK	
2	B	1	"	"	"	"	"	"	"

A = White B = Red

(1 pattern consists of 2 stitches and 4 rows.)



25



26

ORDER	PATTERN PANEL	CAM LEV	PUSH BUTTONS	PATTERN LEV DIR	ROWS DIR
1	0 7 3	PICK	<input type="checkbox"/> <input type="checkbox"/>	PICK	<input type="checkbox"/>
2	1 1				<input type="checkbox"/>
3	2 1				<input type="checkbox"/>
4	3 1				<input type="checkbox"/>

Pattern 27: 8 stitches and 8 rows



ORDER	PATTERN PANEL	CAM LEV	PUSH BUTTONS	PATTERN LEV DIR	ROWS DIR
1	1 8 3	PICK	<input type="checkbox"/> <input type="checkbox"/>	PICK	<input type="checkbox"/>
2	1 1	LOCK SET			<input type="checkbox"/>
3	1 1	PICK			<input type="checkbox"/>
4	1 1	LOCK SET			<input type="checkbox"/>

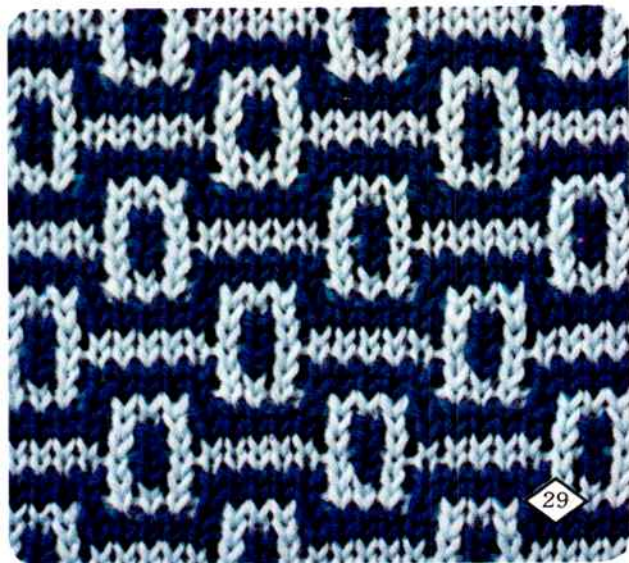
Pattern 28: 8 stitches and 8 rows



ORDER	CON. COLOR	PATTERN PANEL		CAM LEV.	PUSH BUTTONS	PATTERN LEV.	± ROWS DIR.
1	A	3	8	3	PICK		
2	B	2	"	1	"	"	"
3	A	1	•	3	"	"	"
4	B	2	"	8	"	"	"
5	A	1	"	3	"	"	"
6	B	2	"	1	"	"	"
7	A	1	•	3	"	"	"
8	B	2	8	1	"	"	"

A=Light blue B=Navy blue

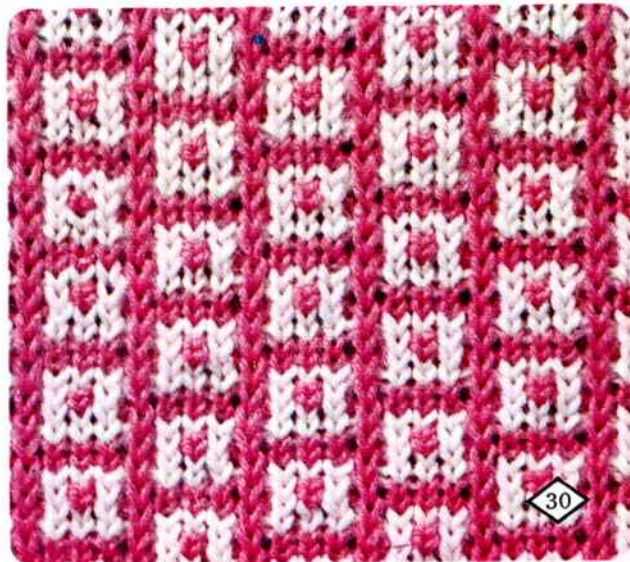
(1 pattern consists of 8 stitches and 16 rows.)



ORDER	CON. COLOR	PATTERN PANEL		CAM LEV.	PUSH BUTTONS	PATTERN LEV.	± ROWS DIR.
1	A	4	•	3	PICK		
2	B	3	"	8	"	"	"
3	A	4	•	3	"	"	"
4	B	1	8	1	"	"	"

A=White B=Pink

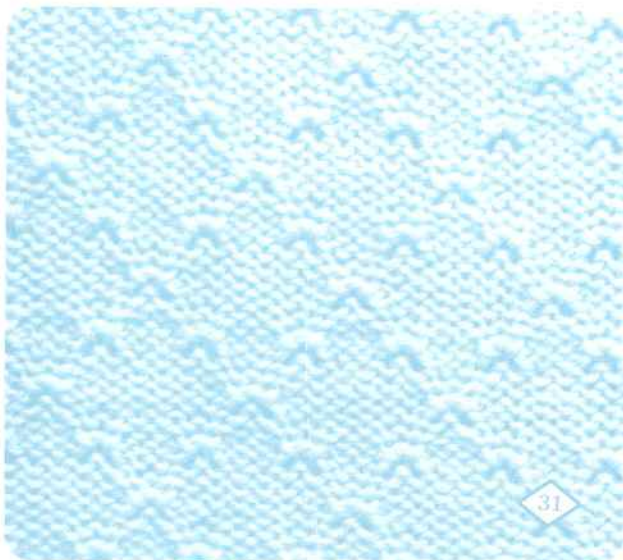
(1 pattern consists of 8 stitches and 8 rows.)





ORDER	PATTERN PANEL	CAM LEV	PUSH BUTTONS	PATTERN LEV	CROWS DIR
1	[1] 1 8 3	PICK	[1] [2]	[1] [2]	DIR
2	[1] 1 8 3	PICK	[1] [2]	[1] [2]	DIR
3	[1] 1 8 3	PICK	[1] [2]	[1] [2]	DIR
4	[1] 1 8 3	PICK	[1] [2]	[1] [2]	DIR
5	[1] 1 8 3	PICK	[1] [2]	[1] [2]	DIR
6	[1] 1 8 3	PICK	[1] [2]	[1] [2]	DIR
7	[1] 1 8 3	PICK	[1] [2]	[1] [2]	DIR
8	[1] 1 8 3	PICK	[1] [2]	[1] [2]	DIR

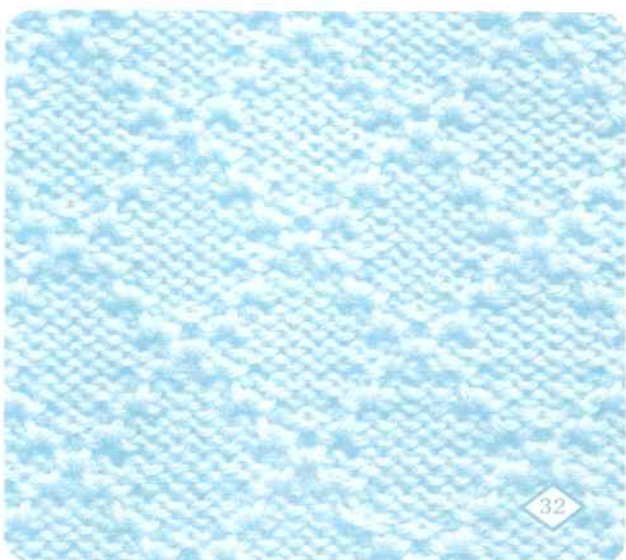
It is possible to set the number of rows and the direction.



31

ORDER	PATTERN PANEL	CAM LEV	PUSH BUTTONS	PATTERN LEV	CROWS DIR
1	[1] 3 8 3	PICK	[1] [2]	[1] [2]	DIR
2	[1] 2 8 1	PICK	[1] [2]	[1] [2]	DIR
3	[1] 1 8 3	PICK	[1] [2]	[1] [2]	DIR
4	[2] 1 8 1	PICK	[1] [2]	[1] [2]	DIR
5	[1] 1 8 3	PICK	[1] [2]	[1] [2]	DIR
6	[2] 1 8 1	PICK	[1] [2]	[1] [2]	DIR
7	[1] 1 8 3	PICK	[1] [2]	[1] [2]	DIR
8	[1] 2 8 1	PICK	[1] [2]	[1] [2]	DIR

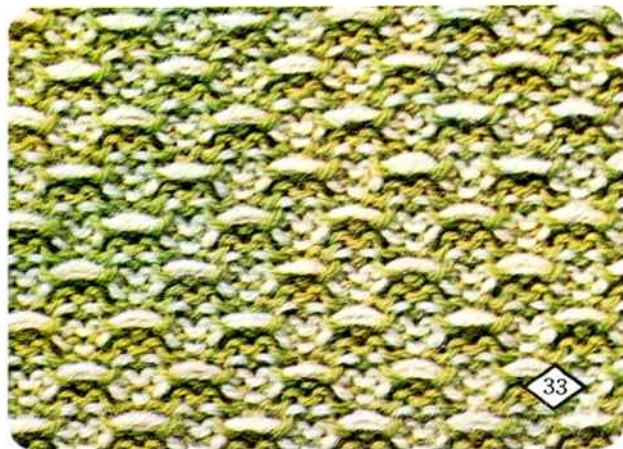
It is possible to set the number of stitches and the direction.



32

ORDER	CON. COLOR	PATTERN PANEL	CAM LEV.	PUSH BUTTONS	PATTERN LEV.	ROWS DIR.
1	A	0 ● 2	STOCKI-NET	2 1 1 2	●	↔
2	B	" " " "	"	■ □ □ □	"	"
3	A	2 1 2	"	■ □ □ □	"	"
4	B	" " " "	"	■ □ □ □	"	"

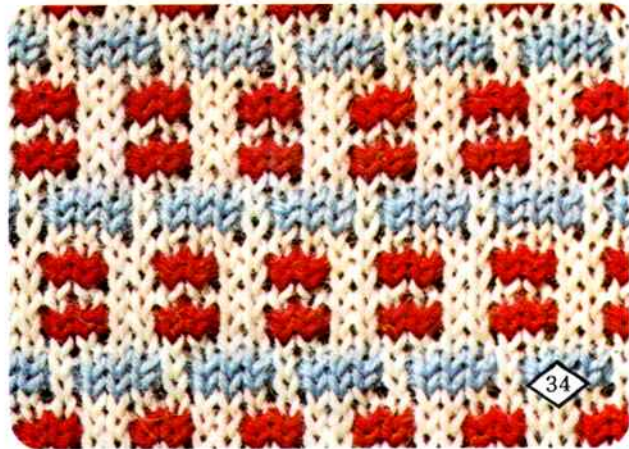
A = Green B = White

(1 pattern consists of  
4 stitches and 6 rows.)

33

ORDER	CON. COLOR	PATTERN PANEL	CAM LEV.	PUSH BUTTONS	PATTERN LEV.	ROWS DIR.
1	A	0 ● 4	STOCKI-NET	2 1 1 2	●	↔
2	B	" " " "	"	■ □ □ □	"	"
3	C	3 1 3	"	■ □ □ □	"	"
4	B	" " " "	"	■ □ □ □	"	"
5	C	" " " "	"	■ □ □ □	"	"
6	B	" " " "	"	■ □ □ □	"	"
7	A	1 1 1	"	■ □ □ □	"	"
8	B	" " " "	"	■ □ □ □	"	"
9	C	2 1 2	"	■ □ □ □	"	"
10	B	" " " "	"	■ □ □ □	"	"
11	C	" " " "	"	■ □ □ □	"	"
12	B	" " " "	"	■ □ □ □	"	"

A = Blue B = White C = Red

(1 pattern consists of  
4 stitches and 20 rows.)

34



20222 1234 8 2 1 2 3 4 5 6 7 8 9 0

ORDER	PATTERN PANEL	CAM LEV	PUSH-BUTTONS	PATTERN LEV	ROWS DIR
1	1		2 1	1 2	
2	2				

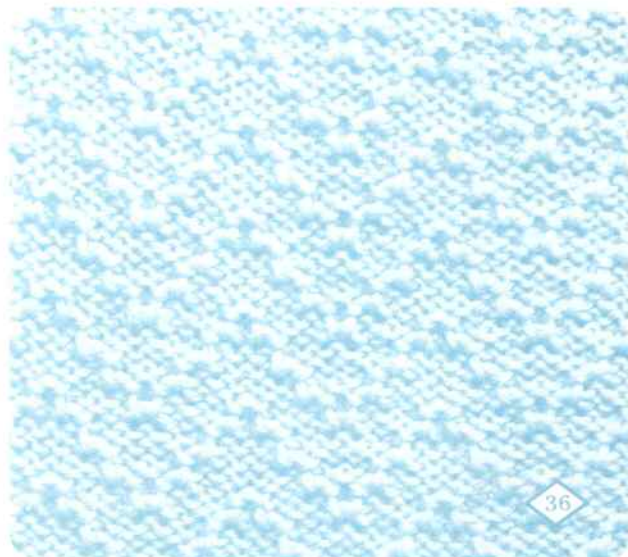
pattern complexity of 8 stitches and 8 rows



35

ORDER	PATTERN PANEL	CAM LEV	PUSH-BUTTONS	PATTERN LEV	ROWS DIR
1	1		2 1	1 2	
2	2				
3	3				
4	4				

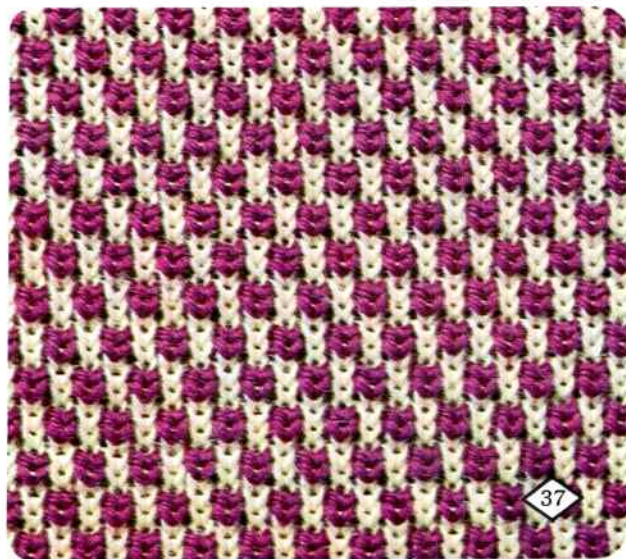
pattern complexity of 8 stitches and 8 rows



36

ORDER	CON. COLOR	PATTERN PANEL			CAM LEV.	PUSH BUTTONS		PATTERN LEV.	≠ ROWS DIR.
		↓	○	○	○	2 1	1 2	↓	↔
1	A	○	●	1	STOCKI-NET			●	↔
2	B	"	"	"	"		"	"	"
3	A	1	"	"	"		"	"	"
4	B	"	"	"	"		"	"	"

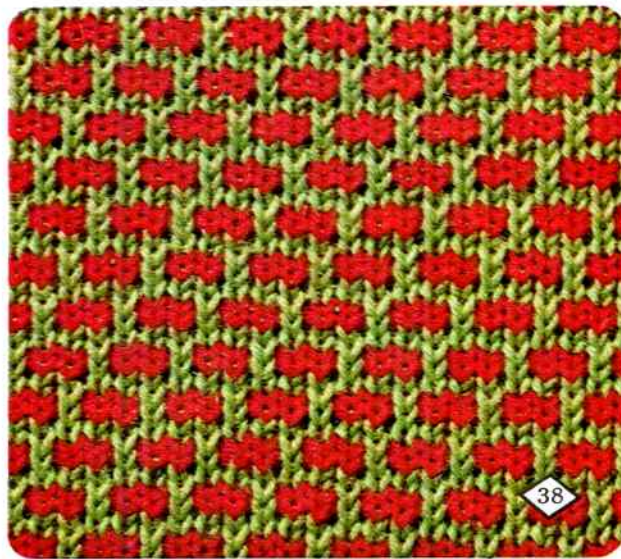
A = Purple B = White

(1 pattern consists of  
2 stitches and 8 rows.)

37

ORDER	CON. COLOR	PATTERN PANEL			CAM LEV.	PUSH BUTTONS		PATTERN LEV.	≠ ROWS DIR.
		↓	○	○	○	2 1	1 2	↓	↔
1	A	○	7	●	STOCKI-NET			●	↔
2	B	"	"	"	"		"	"	"
3	A	1	"	"	"		"	"	"
4	B	"	"	"	"		"	"	"
5	A	2	"	"	"		"	"	"
6	B	"	"	"	"		"	"	"
7									

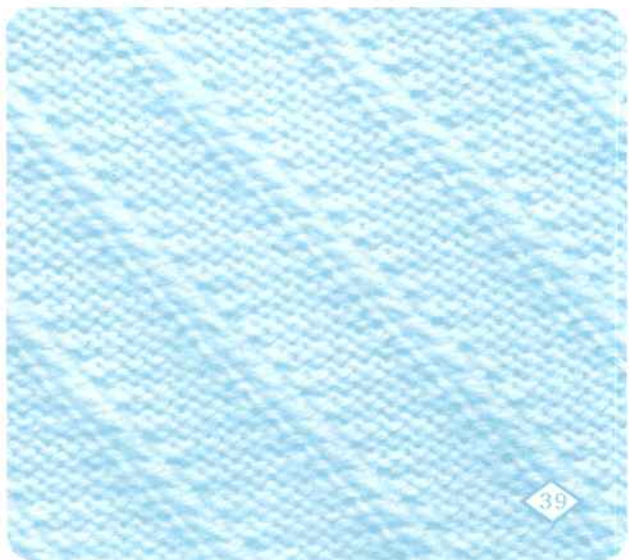
A = Red B = Yellowish green

(1 pattern consists of  
3 stitches and 12 rows.)

38

ORDER	PATTERN PANEL	CAM LEV	PUSH BUTTONS	PATTERN LEV	ROWS
	1		2 1 1 2	2	DIR
1	3 8 2	L	PICK		
2	2				
3	1				
4	0				
5	1				
6	2				
7	3				
8	4				

1 pattern consists of 5 stitches and 16 rows.





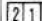




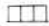



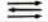


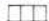



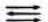
39

ORDER	PATTERN PANEL	CAM LEV	PUSH BUTTONS	PATTERN LEV	ROWS
	1		2 1 1 2	2	DIR
1	0	4	STOCKING NET		
2					
3	1	1			
4					
5	2	4			
8					
7	1	1			
8					

1 pattern consists of 4 stitches and 12 rows.












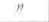





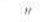



40

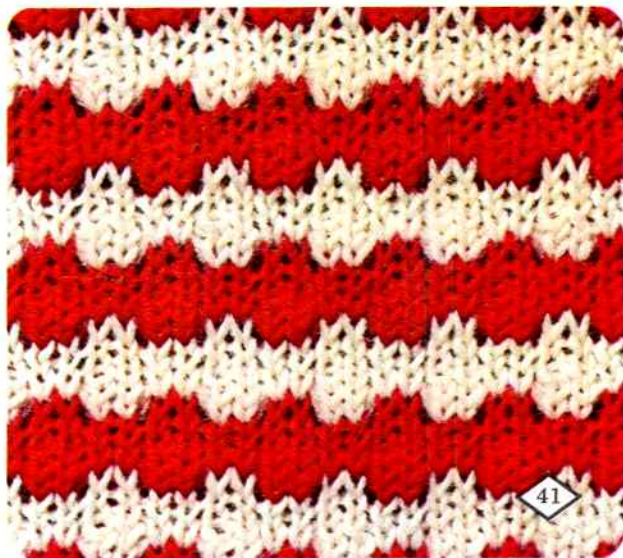
ORDER	CON. COLOR	PATTERN PANEL		CAM LEV.	PUSH BUTTONS		PATTERN LEV.	ROWS DIR.	
									
1	A	0	•	2				•	
2	"	"	"	"	"			"	
3	B	2		"	"			"	
4	"	"	"	"	"			"	

A=Red B=White

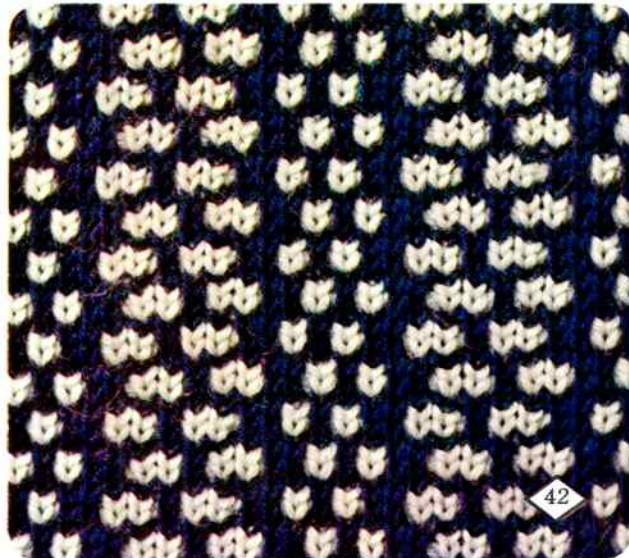
(1 pattern consists of  
4 stitches and 12 rows.)

ORDER	CON. COLOR	PATTERN PANEL		CAM LEV.	PUSH BUTTONS		PATTERN LEV.	ROWS DIR.	
									
1	A	0	7	4				•	
2	B	"	"	"	"			"	
3	A	1		"	"			"	
4	B	"	"	"	"			"	

A=Light blue B=Navy blue

(1 pattern consists of  
12 stitches and 8 rows.)

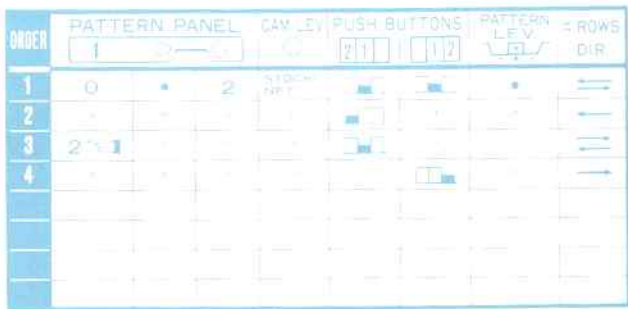
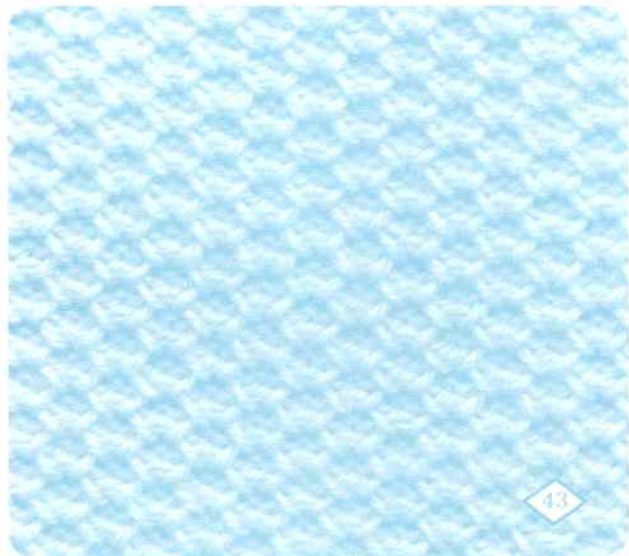
41



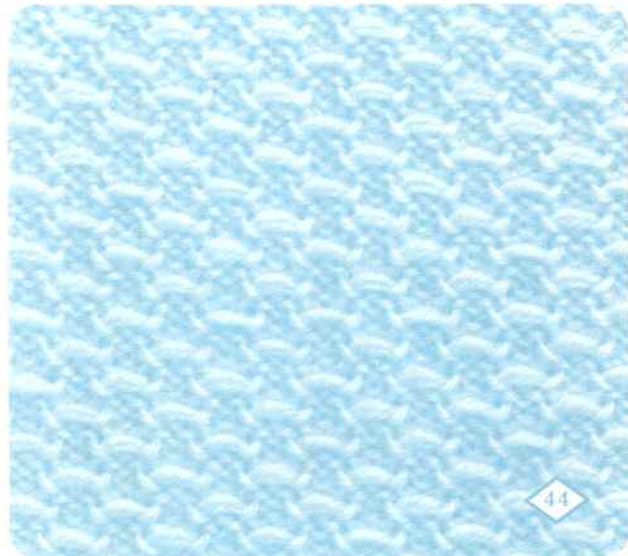
42



{ pattern consists of 2 stitches and 4 rows }



{ pattern consists of 4 stitches and 6 rows }



ORDER	CON. COLOR	PATTERN PANEL			CAM LEV.	PUSH BUTTONS		PATTERN LEV.	# ROWS DIR.
		↓	○	○	⊙	2 1	1 2	⌋	
1	A	0	8	3	KNIT-IN	☐	☐	•	≡
2	B	1	•	1	"	"	"	"	≡
3	"	"	"	"	STOCKI-NET	"	"	"	→
4	A	4	8	3	KNIT-IN	"	"	"	≡
5	B	3	•	1	"	"	"	"	≡
6	"	"	"	"	STOCKI-NET	"	"	"	→

A=Yellowish green B=Green

(1 pattern consists of 8 stitches and 16 rows.)



45

ORDER	CON. COLOR	PATTERN PANEL			CAM LEV.	PUSH BUTTONS		PATTERN LEV.	# ROWS DIR.
		↓	○	○	⊙	2 1	1 2	⌋	
1	A	0	8	1	KNIT-IN	☐	☐	•	≡
2	"	"	"	"	STOCKI-NET	"	"	"	→
3	B	"	"	"	KNIT-IN	"	"	"	≡
4	"	"	"	"	STOCKI-NET	"	"	"	→

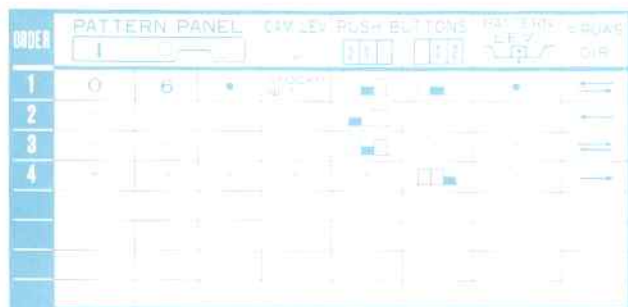
A=Blownish gold B=Green

(1 pattern consists of 8 stitches and 8 rows.)

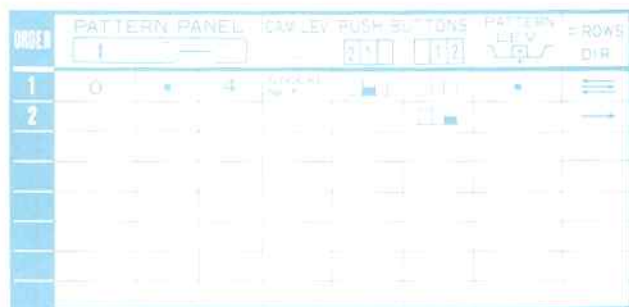


46





1 pattern consists of 6 columns and 3 rows



2 pattern consists of 4 columns and 4 rows



47

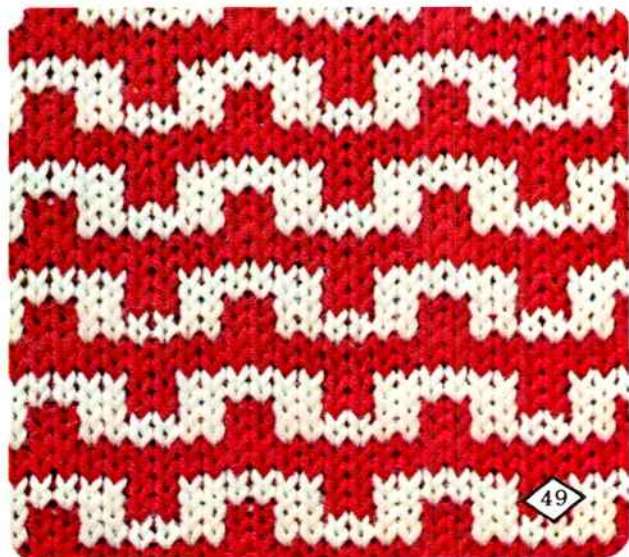


48

ORDER	CON. COLOR	PATTERN PANEL		CAM LEV.	PUSH BUTTONS		PATTERN LEV.	# ROWS	
								DIR.	
1	A	1	8	2	KNIT-IN				
2	B	3	•	"	"	"	"	"	"
3	A	3	8	"	"	"	"	"	"
4	B	"	"	"	STOCKI-NET	"	"	"	"

A = White B = Red

(1 pattern consists of 8 stitches and 8 rows.)



ORDER	CON. COLOR	PATTERN PANEL		CAM LEV.	PUSH BUTTONS		PATTERN LEV.	# ROWS	
								DIR.	
1	A	0	8	1	KNIT-IN				
2	B	4	"	"	"	"	"	"	"

A = Beige B = Blown

(1 pattern consists of 8 stitches and 4 rows.)

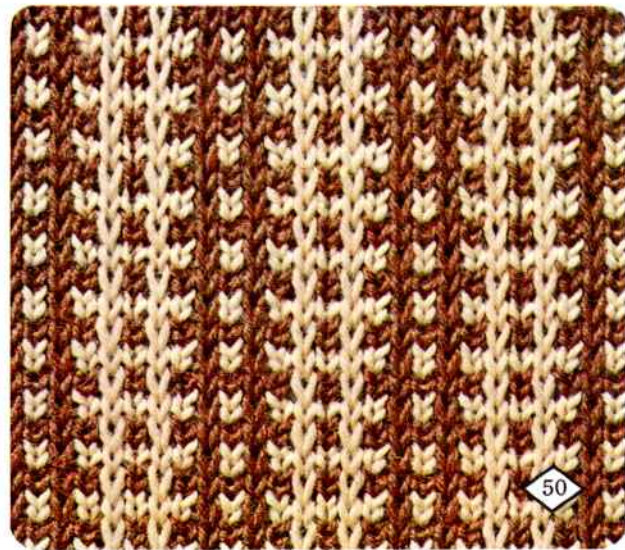




Figure 51: Pattern layout of 4 rows and 4 bits

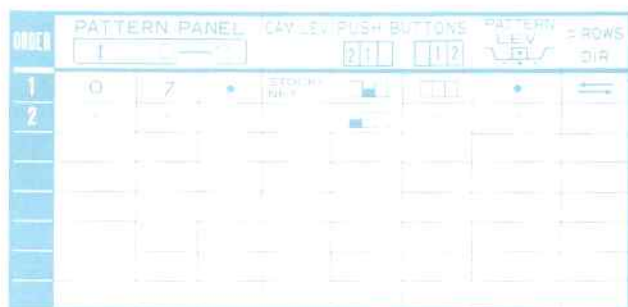
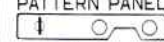


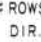



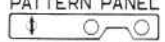

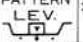
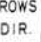
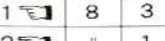
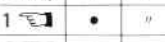
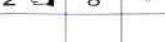
Figure 52: Pattern layout of 4 rows and 3 bits



ORDER	CON. COLOR	PATTERN PANEL	CAM LEV.	PUSH BUTTONS	PATTERN LEV.	ROWS DIR.
1	A		KNIT-IN			
2	B		"	"	"	"

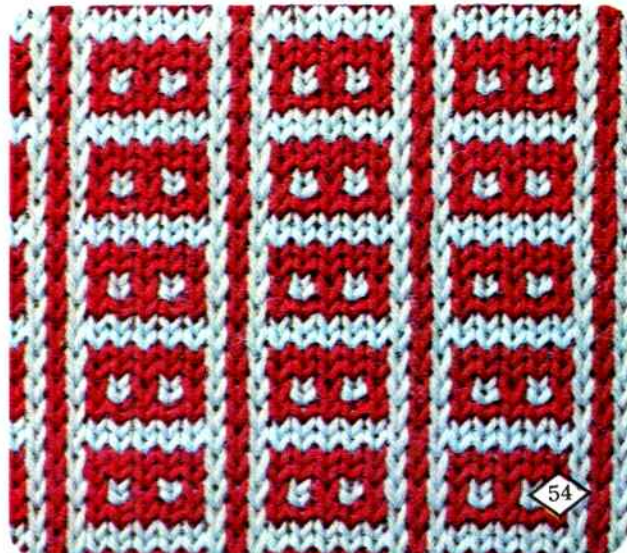
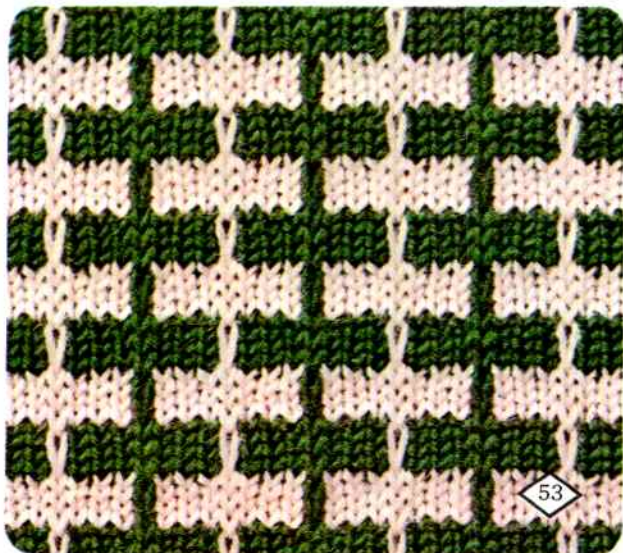
A=Light pink B=Green

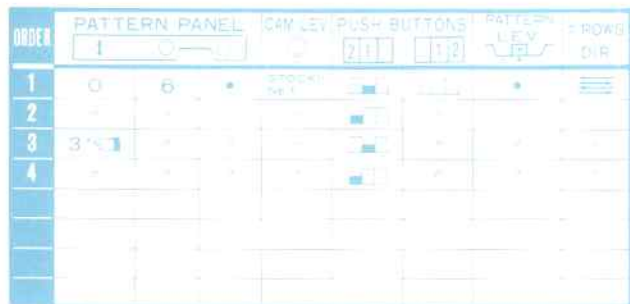
(1 pattern consists of 8 stitches and 8 rows.)

ORDER	CON. COLOR	PATTERN PANEL	CAM LEV.	PUSH BUTTONS	PATTERN LEV.	ROWS DIR.
1	A		KNIT-IN			
2	B		"	"	"	"
3	A		"	"	"	"
4	B		"	"	"	"

A=Blue B=Brick color

(1 pattern consists of 8 stitches and 8 rows.)

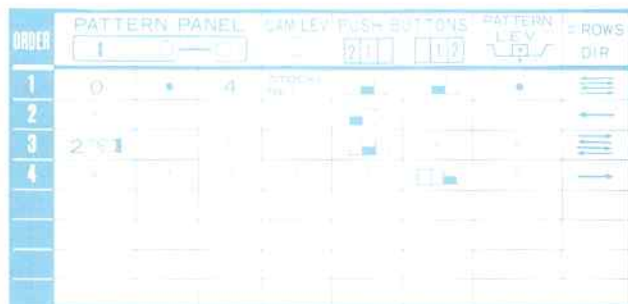




pattern consists of 6 stitches and 6 rows







55



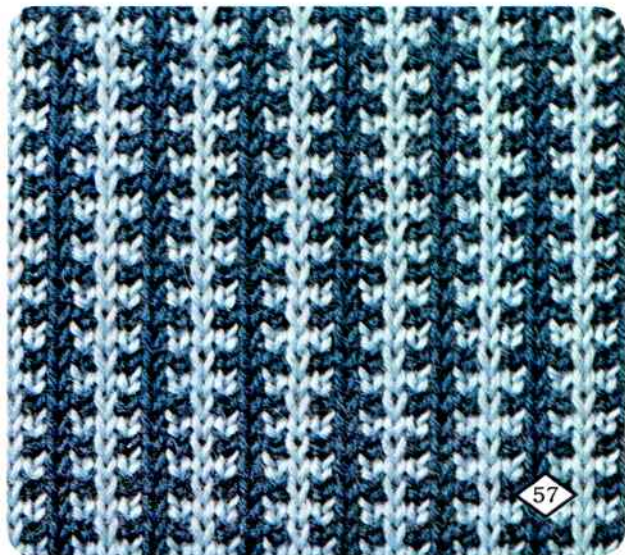
pattern consists of 4 stitches and 4 rows


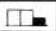
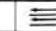



56

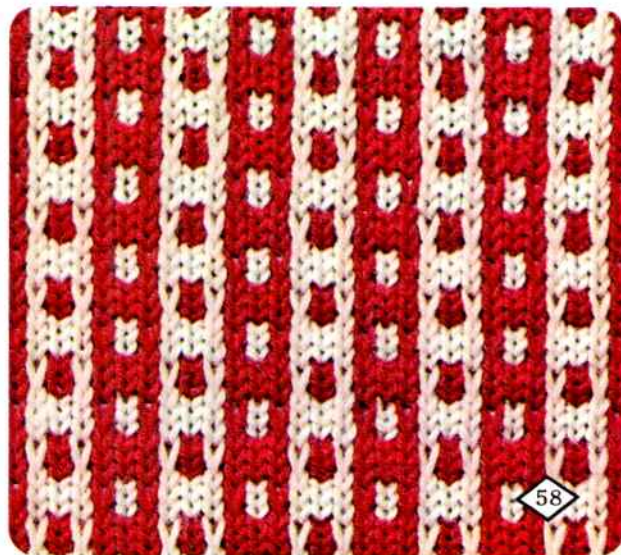
ORDER	CON. COLOR	PATTERN PANEL	CAM LEV.	PUSH BUTTONS	PATTERN LEV.	# ROWS DIR.
1	A	0 ● 3	KNIT-IN	 	●	
2	B	2 	"	"	"	"

A=Navy blue B=Light blue

(1 pattern consists of  
4 stitches and 4 rows.)

ORDER	CON. COLOR	PATTERN PANEL	CAM LEV.	PUSH BUTTONS	PATTERN LEV.	# ROWS DIR.
1	A	0 7 1	KNIT-IN	 	●	
2	B	3 	"	"	"	"





























A=Light pink B=Red

(1 pattern consists of  
6 stitches and 8 rows.)

ORDER	PATTERN PANEL			CAM LEV	PUSH BUTTONS		PATTERN LEV	ROWS DIR.
	↑	○	○	○	2 1	1 2	↓	
1	0	6	•	STOCK NET	<input checked="" type="checkbox"/>	<input checked="" type="checkbox"/>	•	→
2					<input checked="" type="checkbox"/>			→
3					<input checked="" type="checkbox"/>			→
4						<input checked="" type="checkbox"/>		→
5						<input checked="" type="checkbox"/>		→
6					<input checked="" type="checkbox"/>			→
7					<input checked="" type="checkbox"/>			→
8						<input checked="" type="checkbox"/>		→
9						<input checked="" type="checkbox"/>		→
10					<input checked="" type="checkbox"/>			→
11	3				<input checked="" type="checkbox"/>			→
12						<input checked="" type="checkbox"/>		→
13						<input checked="" type="checkbox"/>		→
14					<input checked="" type="checkbox"/>			→
15					<input checked="" type="checkbox"/>			→
16						<input checked="" type="checkbox"/>		→
17						<input checked="" type="checkbox"/>		→
18					<input checked="" type="checkbox"/>			→
19					<input checked="" type="checkbox"/>			→
20						<input checked="" type="checkbox"/>		→

1 pattern consists of 6 stitches and 84 rows
















ORDER	CON. COLOR	PATTERN PANEL			CAM LEV.	PUSH BUTTONS		PATTERN LEV.	ROWS DIR.
1	A		3	8					
2	"	"	"	"	"	"	"	"	
3	B		2	"	"	"	"	"	
4	"	"	"	"	"	"	"	"	
5	A		1	"	"	"	"	"	
6	"	"	"	"	"	"	"	"	
7	B		0	"	"	"	"	"	
8	"	"	"	"	"	"	"	"	
9	A		1	"	"	"	"	"	
10	"	"	"	"	"	"	"	"	
11	B		2	"	"	"	"	"	
12	"	"	"	"	"	"	"	"	
13	A		3	"	"	"	"	"	
14	"	"	"	"	"	"	"	"	
15	B		4	"	"	"	"	"	
16	"	"	"	"	"	"	"	"	

A=Light blue B=Navy blue

(1 pattern consists of 8 stitches and 25 rows.)



60

ORDER	CON. COLOR P.Y.V.F.		PATTERN PANEL		CAM LEV.	PUSH BUTTONS		PATTERN LEV.	ROWS DIR.
1	A	B		3	8				
2	"	"	"	2	"	"	"	"	
3	"	"	"	1	"	"	"	"	
4	"	"	"	2	"	"	"	"	
5	"	"	"	3	"	"	"	"	
6	"	"	"	1	"	"	"	"	
7	"	"	"	0	"	"	"	"	
8	"	"	"	1	"	"	"	"	
9	"	"	"	0	"	"	"	"	
10	"	"	"	1	"	"	"	"	

A=Brownish gold B=Light green

(1 pattern consists of 8 stitches and 18 rows.)

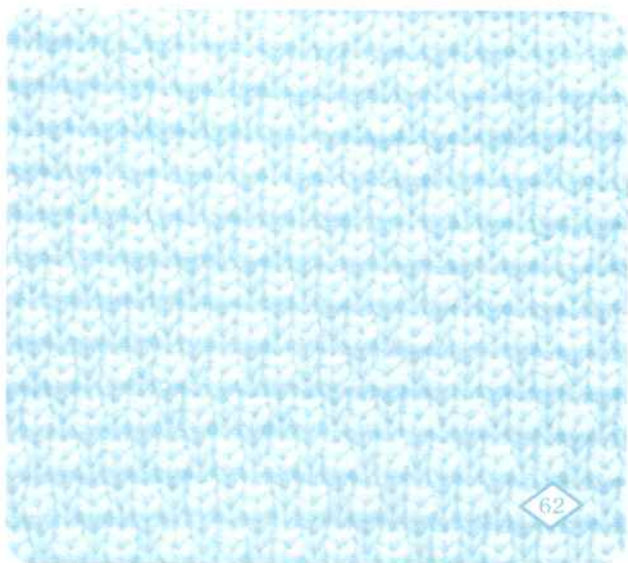


61



ORDER	PATTERN PANEL	CAM LEV	PUSH BUTTONS	PATTERN LEV	ROWS DIR
1		0			
2		1			
3		2			
4		3			

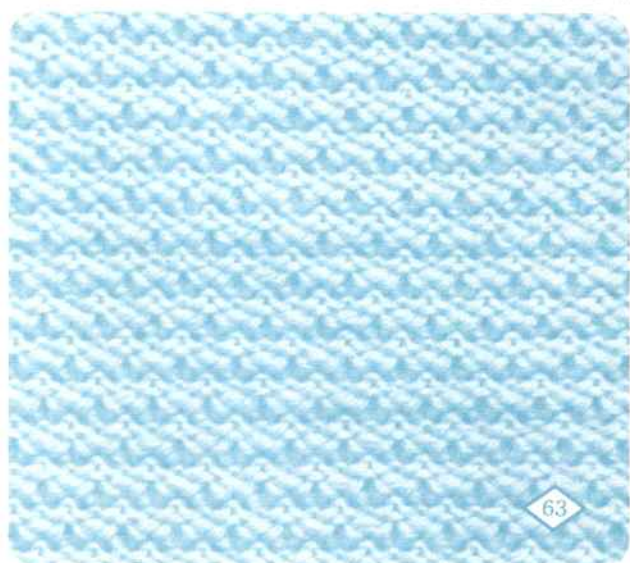
1 pattern consists of 2 stitches and 8 rows.



62

ORDER	PATTERN PANEL	CAM LEV	PUSH BUTTONS	PATTERN LEV	ROWS DIR
1		0			
2		1			
3		2			
4		3			

1 pattern consists of 2 stitches and 8 rows.

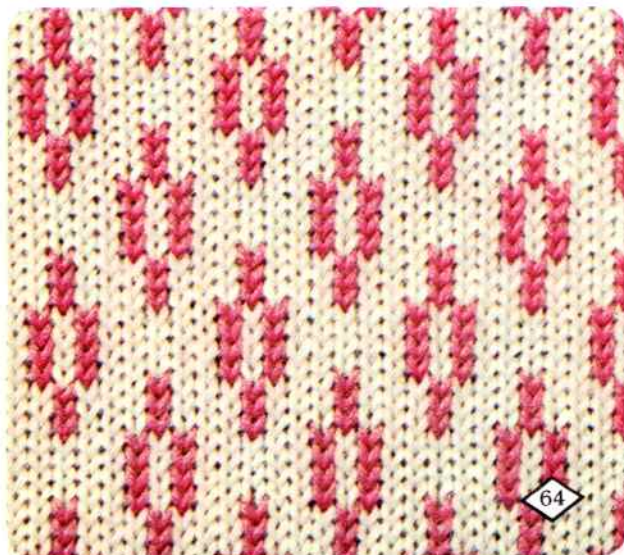


63

ORDER	CON COLOR		PATTERN PANEL			CAM LEV.	PUSH BUTTONS		PATTERN LEV.	# ROWS DIR.	
	P.Y.	Y.F.	↓	○	○	○	2 1	1 2	LEV.		
1	A	B	1	☞	•	3	KNIT-IN	☐	☐	KNIT-IN	☐
2	"	"	2	☞		8	"	"	"	"	☐
3	"	"	☞	3	•	3	"	"	"	"	☐
4	"	"	☞	2		8	"	"	"	"	☐

A=Pink B=White

(1 pattern consists of 8 stitches and 14 rows.)

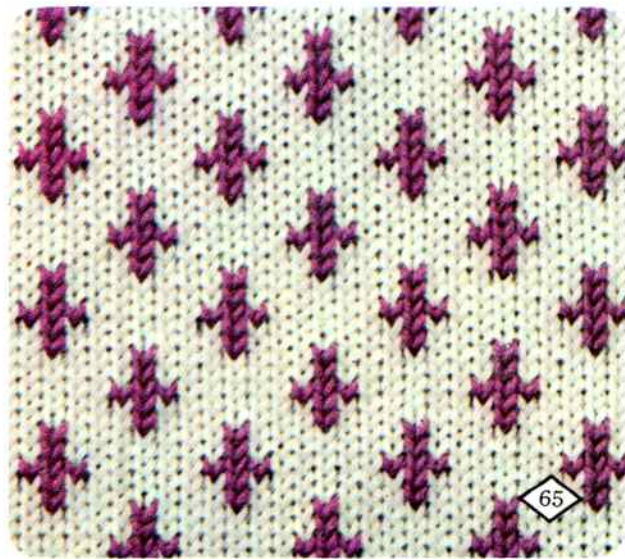


64

ORDER	CON COLOR		PATTERN PANEL			CAM LEV.	PUSH BUTTONS		PATTERN LEV.	# ROWS DIR.		
	P.Y.	Y.F.	↓	○	○	○	2 1	1 2	LEV.			
1	A	B	1	☞		8	3	KNIT-IN	☐	☐	KNIT-IN	☐
2	"	"	2	☞			4	"	"	"	"	☐
3	"	"	1	☞			3	"	"	"	"	☐
4	"	"	☞	3			"	"	"	"	"	☐
5	"	"	☞	2			4	"	"	"	"	☐
6	"	"	☞	3			3	"	"	"	"	☐

A=Purple B=White

(1 pattern consists of 8 stitches and 10 rows.)



65

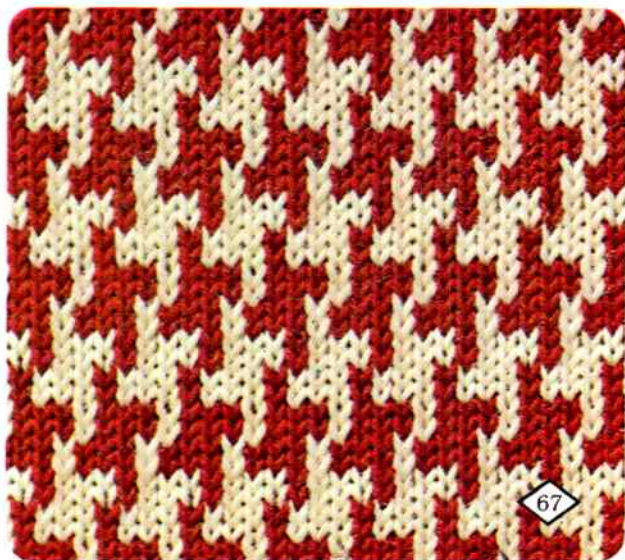
ORDER	PATTERN PANEL			CAM LEV	PUSH BUTTONS		PATTERN LEV	ROWS DIR
	1	2	3	0	2/1	1/2	1	DIR
1	4	6	4	STOOKI NET				
2	"	"	"	"				
3	3	"	"	"				
4	"	"	"	"				
5	2	"	"	"				
6	"	"	"	"				
7	1	"	"	"				
8	"	"	"	"				
9	0	"	"	"				
10	"	"	"	"				
11		"	"	"				
12	"	"	"	"				
13		"	"	"				
14	"	"	"	"				
15		"	"	"				
16	"	"	"	"				
17	0	"	"	"				
18	"	"	"	"				
19	1	"	"	"				
20	"	"	"	"				
21	2	"	"	"				
22	"	"	"	"				
23	3	"	"	"				
24	"	"	"	"				

[1] pattern consists of 12 stitches and 36 rows.



ORDER	CON. COLOR P.Y./Y.F.		PATTERN PANEL		CAM LEV.	PUSH BUTTONS		PATTERN LEV.	= ROWS DIR.
	A	B	○	●		2 1	1 2		
1	A	B	○	●	3	KNIT-IN		KNIT-IN	↔
2	"	"	"	"	4	"	"	"	"
3	"	"	1	"	"	"	"	"	"
4	"	"	3	"	3	"	"	"	"

A=Brick color B=White

(1 pattern consists of  
4 stitches and 8 rows.)

ORDER	CON. COLOR P.Y./Y.F.		PATTERN PANEL		CAM LEV.	PUSH BUTTONS		PATTERN LEV.	= ROWS DIR.
	A	B	○	●		2 1	1 2		
1	A	B	○	●	3	KNIT-IN		KNIT-IN	↔
2	"	"	"	"	2	"	"	"	"
3	"	"	2	"	4	"	"	"	"
4	"	"	"	"	●	"	"	"	"
5	"	"	"	"	"	"	"	"	≡
6	"	"	3	"	4	"	"	"	↔
7	"	"	2	"	2	"	"	"	"
8	"	"	3	"	3	"	"	"	"

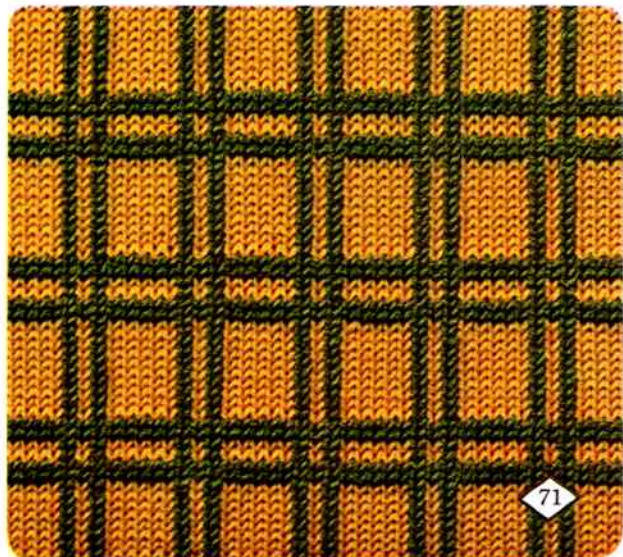
A=White B=Purple

(1 pattern consists of  
8 stitches and 20 rows.)



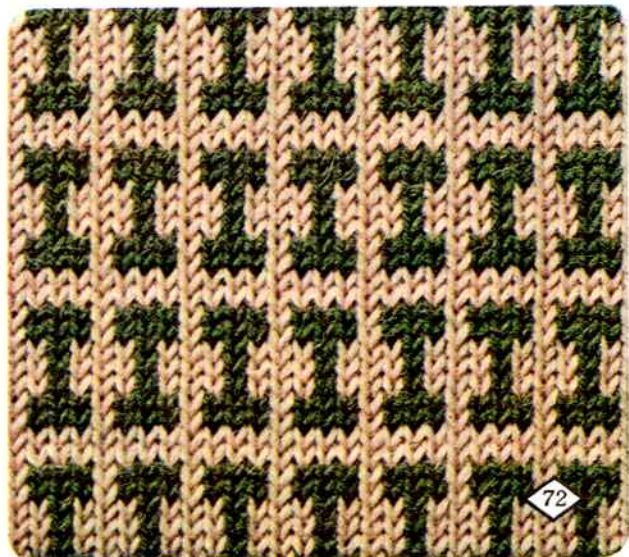
ORDER	CON. COLOR P.Y./Y.F.		PATTERN PANEL			CAM LEV.	PUSH BUTTONS		PATTERN LEV.	≠ ROWS
									DIR.	
1	A		3	8	1	STOCKI- NET			KNIT-IN	↔
2	A	B	"	"	"	KNIT-IN	"	"	"	"
3	A		"	"	"	STOCKI- NET	"	"	"	"
4	A	B	"	"	"	KNIT-IN	"	"	"	≡

A=Green B=Blownish gold

(1 pattern consists of  
8 stitches and 16 rows.)

ORDER	CON. COLOR P.Y./Y.F.		PATTERN PANEL			CAM LEV.	PUSH BUTTONS		PATTERN LEV.	≠ ROWS
									DIR.	
1	A	B	○	●	4	KNIT-IN			KNIT-IN	↔
2	"	"	3	"	3	"	"	"	"	≡
3	"	"	○	"	4	"	"	"	"	↔
4	"	"	"	"	"	STOCKI- NET	"	"	"	↔

A=Green B=Beige

(1 pattern consists of  
4 stitches and 9 rows.)

ORDER	PATTERN PANEL	CAM LEV	PUSH BUTTONS	PATTERN LEV	= ROWS DIR.
1					
2	"	"	"	"	"
3		"	"	"	"
4	"	"	"	"	"
5		"	"	"	"
6	"	"	"	"	"
7		"	"	"	"
8	"	"	"	"	"

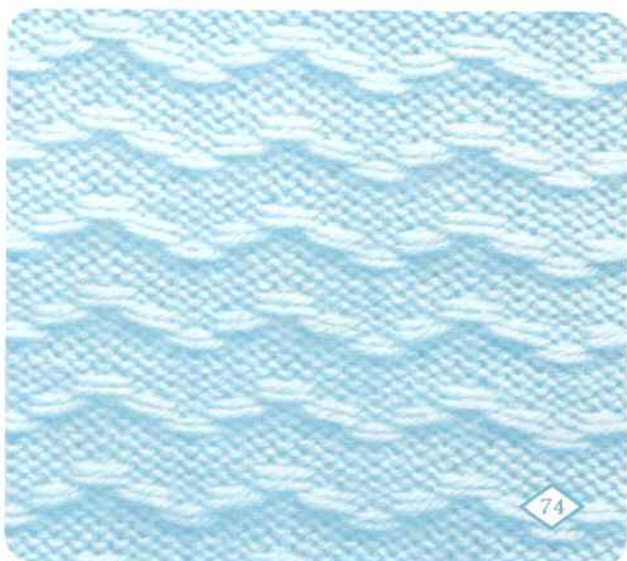
1 pattern consists of 4 stitches and 16 rows



73

ORDER	PATTERN PANEL	CAM LEV	PUSH BUTTONS	PATTERN LEV	= ROWS DIR.
1					
2		"	"	"	"
3		"	"	"	"
4	"	"	"	"	"

1 pattern consists of 8 stitches and 8 rows



74

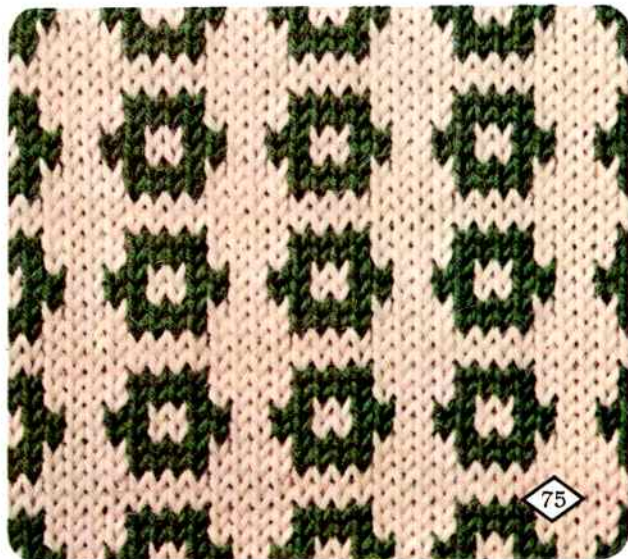
ORDER	CON. COLOR P.Y. Y.F.		PATTERN PANEL		CAM LEV.	PUSH BUTTONS		PATTERN LEV.	± ROWS	
	A	B	↓	↶	⊙	2 1	1 2	↵	DIR.	
1	A	B	0	8	•	KNIT-IN			KNIT-IN	↔
2	"	"	1	8	•	"	"	"	"	"
3	"	"	0	8	•	"	"	"	"	"
4	"	"	"	"	"	STOCKI- NET	"	"	"	"

A=Green B=Beige

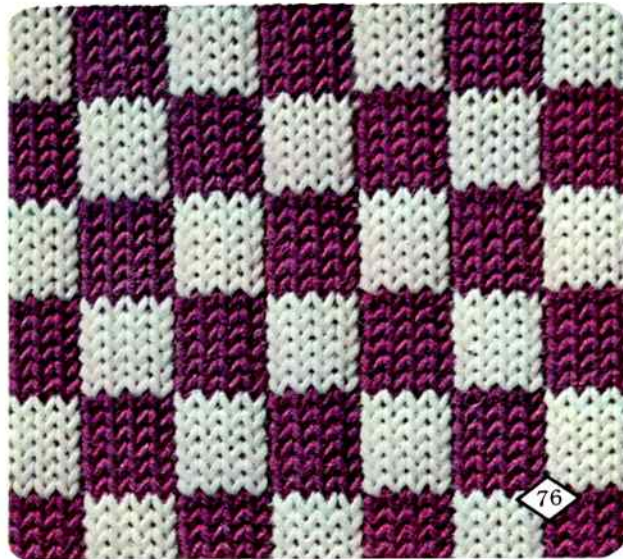
(1 pattern consists of  
8 stitches and 8 rows.)

ORDER	CON. COLOR P.Y. Y.F.		PATTERN PANEL		CAM LEV.	PUSH BUTTONS		PATTERN LEV.	± ROWS	
	A	B	↓	↶	⊙	2 1	1 2	↵	DIR.	
1	A	B	0	8	•	KNIT-IN			KNIT-IN	↔
2	"	"	4	8	•	"	"	"	"	"

A=Purple B=White

(1 pattern consists of  
8 stitches and 12 rows.)

75

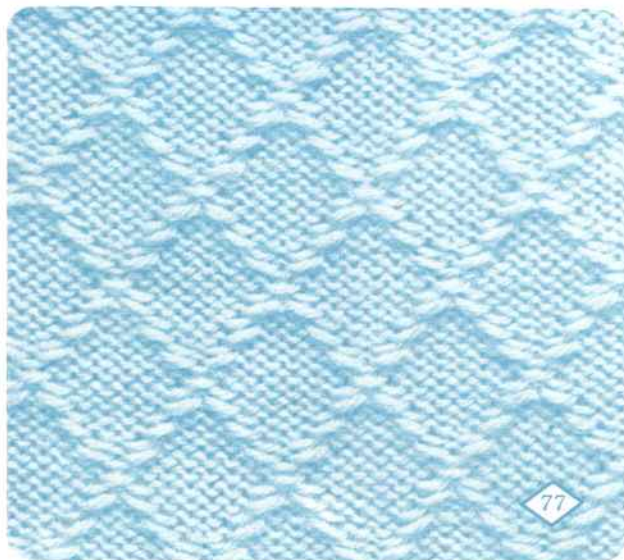


76



ORDER	PATTERN PANEL			CAM LEV.	PUSH BUTTONS		PATTERN LEV	ROWS DIR.
	↑	○	○	○	2 1	1 2	LEV DIR	
1	[K] 3	8	3	KNIT-IN	[K] [K]	[K] [K]	•	→
2	[K] 2	"	1	"	[K] [K]	[K] [K]	"	"
3	[K] 1	•	3	"	[K] [K]	[K] [K]	"	"
4	2 [K]	8	1	"	[K] [K]	[K] [K]	"	"
5	1 [K]	"	3	"	[K] [K]	[K] [K]	"	"
6	2 [K]	"	1	"	[K] [K]	[K] [K]	"	"
7	[K] 1	•	3	"	[K] [K]	[K] [K]	"	"
8	[K] 2	8	1	"	[K] [K]	[K] [K]	"	"

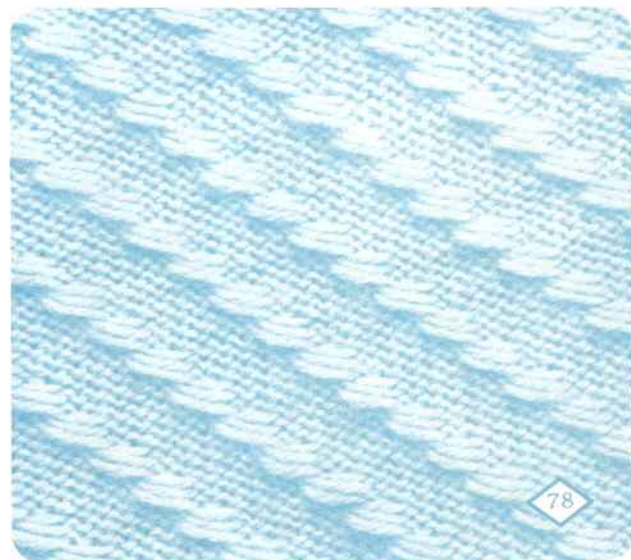
(1 pattern consists of 8 stitches and 16 rows.)



77

ORDER	PATTERN PANEL			CAM LEV.	PUSH BUTTONS		PATTERN LEV	ROWS DIR.
	↑	○	○	○	2 1	1 2	LEV DIR	
1	[K] 3	8	2	KNIT-IN	[K] [K]	[K] [K]	•	→
2	[K] 1	"	"	"	[K] [K]	[K] [K]	"	"
3	1 [K]	"	"	"	[K] [K]	[K] [K]	"	"
4	3 [K]	"	"	"	[K] [K]	[K] [K]	"	"

(1 pattern consists of 8 stitches and 12 rows.)

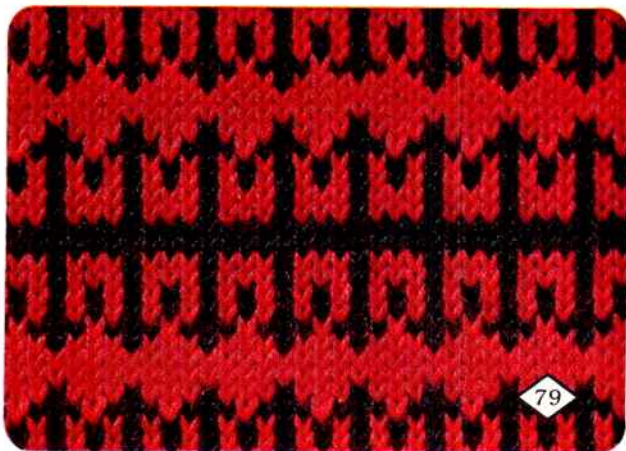


78

ORDER	CON. COLOR		PATTERN PANEL			CAM LEV.	PUSH BUTTONS		PATTERN LEV.	± ROWS
	P.Y.	Y.F.	↓	○	●	○	2 1	1 2	LEV. ↓	DIR.
1	A	B	○	●	3	KNIT-IN			KNIT-IN	←
2	"	"	1	"	4	"	"	"	"	→
3	"	"	○	"	1	"	"	"	"	↔
4	"	"	"	"	3	"	"	"	"	↔
5		A	"	"	"	STOCKI-NET	"	"	"	"
6	A	B	"	"	"	KNIT-IN	"	"	"	"
7	"	"	"	"	1	"	"	"	"	"
8	"	"	1	"	4	"	"	"	"	←
9	"	"	○	"	3	"	"	"	"	→
10	"	"	"	"	"	STOCKI-NET	"	"	"	↔

A=Black B=Red

(1 pattern consists of 4 stitches and 16 rows.)



79

ORDER	CON. COLOR		PATTERN PANEL			CAM LEV.	PUSH BUTTONS		PATTERN LEV.	± ROWS
	P.Y.	Y.F.	↓	○	●	○	2 1	1 2	LEV. ↓	DIR.
1	A	B	○	●	8	KNIT-IN			KNIT-IN	←
2	"	"	1	"	"	"	"	"	"	→
3	"	"	2	"	"	"	"	"	"	←
4	"	"	3	"	"	"	"	"	"	→
5	"	"	4	"	"	"	"	"	"	←
6	"	"	3	"	"	"	"	"	"	→
7	"	"	2	"	"	"	"	"	"	←
8	"	"	1	"	"	"	"	"	"	→

A=Yellow B=Blown

(1 pattern consists of 8 stitches and 8 rows.)



80

ORDER	PATTERN PANEL			CAM LEV	PUSH BUTTONS		PATTERN LEV	ROWS DIR
	↓	○	○		2 1	1 2		
1	4	8	2	KNIT-IN	■	■	●	←
2	3	*	*	*	*	*	*	→
3	2	*	*	*	*	*	*	←
4	1	*	*	*	*	*	*	→
5	0	*	*	*	*	*	*	←
6	1	*	*	*	*	*	*	→
7	2	*	*	*	*	*	*	←
8	3	*	*	*	*	*	*	→
9	2	*	*	*	*	*	*	←
10	1	*	*	*	*	*	*	→
11	0	*	*	*	*	*	*	←
12	1	*	*	*	*	*	*	→
13	2	*	*	*	*	*	*	←
14	3	*	*	*	*	*	*	→
15	4	*	*	*	*	*	*	←
16	*	*	*	STOCKING NET	*	*	*	↕

(1) pattern consists of 8 stitches and 17 rows.



81

ORDER	PATTERN PANEL			CAM LEV	PUSH BUTTONS		PATTERN LEV	ROWS DIR
	↓	○	○		2 1	1 2		
1	4	*	3	KNIT-IN	■	■	●	←
2	3	*	*	*	*	*	*	→
3	2	*	*	*	*	*	*	←
4	1	*	*	*	*	*	*	→
5	0	*	*	*	*	*	*	←
6	1	*	*	*	*	*	*	→
7	2	*	*	*	*	*	*	←
8	3	*	*	*	*	*	*	→
9	2	*	*	*	*	*	*	←
10	1	*	*	*	*	*	*	→
11	0	*	*	*	*	*	*	←
12	1	*	*	*	*	*	*	→
13	2	*	*	*	*	*	*	←
14	3	*	*	*	*	*	*	→

(1) pattern consists of 4 stitches and 14 rows.



82

ORDER	CON. COLOR		PATTERN PANEL			CAM LEV.	PUSH BUTTONS		PATTERN LEV.	= ROWS DIR.
	P.Y.	Y.F.	↓	○	○		2 1	1 2		
1	A	B	↗	3	8	2	KNIT-IN		KNIT-IN	←
2	''	''	↘	2	''	''	''	''	''	→
3	''	''	↗	1	•	2	''	''	''	←
4	''	''	↘	2	''	''	''	''	''	→
5	''	''	↗	1	''	2	''	''	''	←
6	''	''	↘	2	''	''	''	''	''	→
7	''	''	↗	2	''	''	''	''	''	←
8	''	''	↘	2	''	2	''	''	''	→
9	''	''	↗	1	''	''	''	''	''	←
10	''	''	↘	2	''	''	''	''	''	→
11	''	''	↗	3	•	2	''	''	''	←
12	''	''	↘	2	8	''	''	''	''	→
13	''	''	↗	3	''	2	''	''	''	←
14	''	''	↘	1	''	''	''	''	''	→
15	''	''	↗	2	''	''	''	''	''	←
16	''	''	↘	1	''	2	''	''	''	→

A=Navy blue B=Light blue

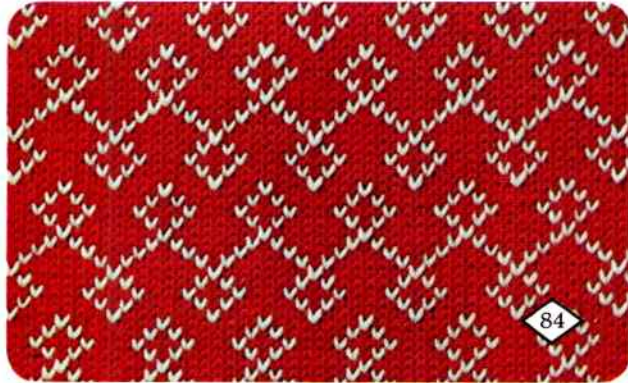
(1 pattern consists of 8 stitches and 16 rows.)



ORDER	CON. COLOR		PATTERN PANEL			CAM LEV.	PUSH BUTTONS		PATTERN LEV.	= ROWS DIR.
	P.Y.	Y.F.	↓	○	○		2 1	1 2		
1	A	B	↗	1	8	3	KNIT-IN		KNIT-IN	←
2	''	''	↘	2	''	1	''	''	''	→
3	''	''	↗	3	•	3	''	''	''	←
4	''	''	↘	2	8	1	''	''	''	→
5	''	''	↗	1	''	3	''	''	''	←
6	''	''	↘	2	''	1	''	''	''	→
7	''	''	↗	3	''	3	''	''	''	←
8	''	''	↘	2	8	1	''	''	''	→
9	''	''	↗	3	''	3	''	''	''	←
10	''	''	↘	2	''	1	''	''	''	→
11	''	''	↗	1	•	3	''	''	''	←
12	''	''	↘	2	8	1	''	''	''	→
13	''	''	↗	3	''	3	''	''	''	←

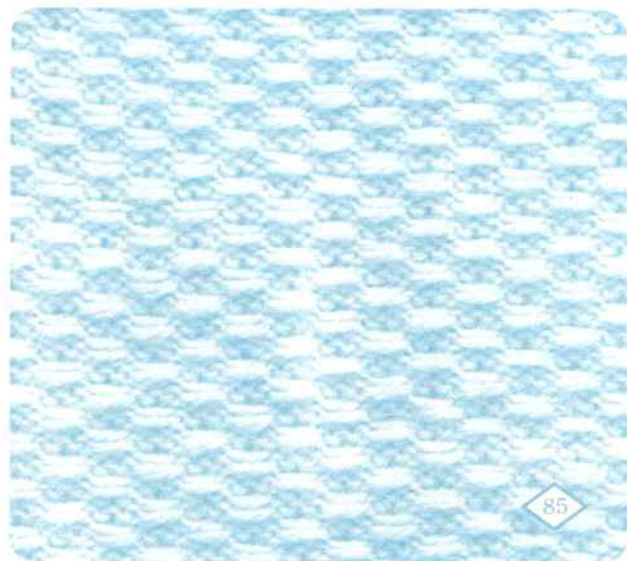
A=White B=Red

(1 pattern consists of 8 stitches and 13 rows.)



ORDER	PATTERN PANEL			CAM LEV	PUSH BUTTONS		PATTERN LEV	ROWS
	1	2	3		21	12		DIR
1	0	•	3	KNIT IN			•	
2	2							

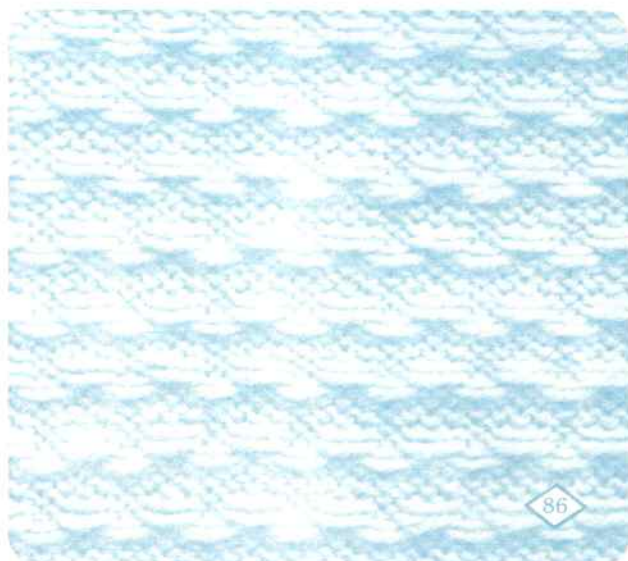
1: pattern consists of 4 stitches and 4 rows



85

ORDER	PATTERN PANEL			CAM LEV	PUSH BUTTONS		PATTERN LEV	ROWS
	1	2	3		21	12		DIR
1	0	•	2	KNIT IN			•	
2	2							
3				STOCK NET				

1: pattern consists of 4 stitches and 6 rows

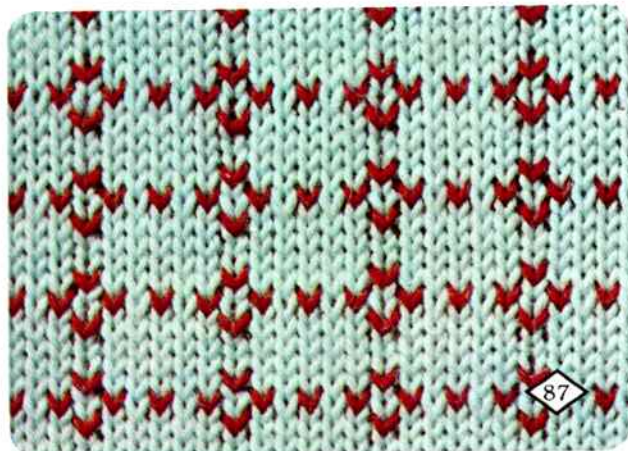


86

ORDER	CON. COLOR	PATTERN PANEL			CAM LEV.	PUSH BUTTONS		PATTERN LEV.	SIDE LEV.	# ROWS DIR.
1	A	0	6	•	KNIT-IN			•	BOTH SIDE	←
2	"	"	"	"	"	"	"	"	K. DIR.	→
3	B	"	"	"	STOCKI-NET	"	"	"	BOTH SIDE	←
4	A		1	•	1	KNIT-IN	"	"	"	→
5	"	"	"	"	"	"	"	"	K. DIR.	←
6	B	"	"	"	STOCKI-NET	"	"	"	BOTH SIDE	→
7	A	0	6	•	KNIT-IN	"	"	"	"	←
8	"	"	"	"	"	"	"	"	K. DIR.	→
9	B	"	"	"	STOCKI-NET	"	"	"	BOTH SIDE	≡

A=Red B=Light blue

(1 pattern consists of 6 stitches and 8 rows.)



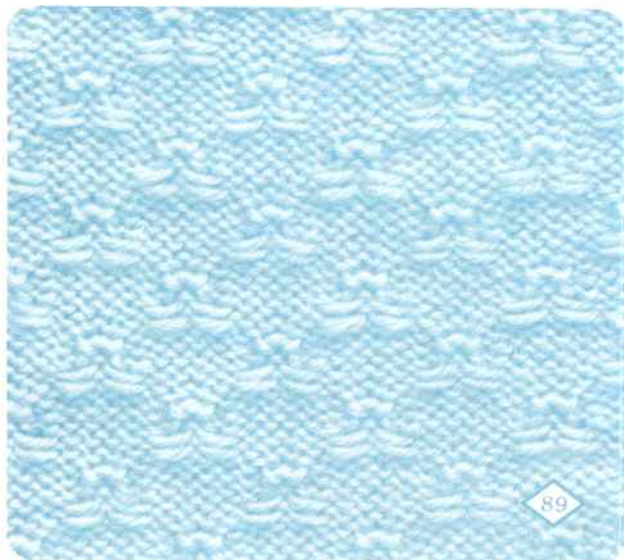
ORDER	CON. COLOR	PATTERN PANEL			CAM LEV.	PUSH BUTTONS		PATTERN LEV.	SIDE LEV.	# ROWS DIR.
1	A	0	•	4	KNIT-IN			•		↔
2	B	"	"	"	STOCKI-NET	"	"	"	"	"
3	C		"	"	KNIT-IN	"	"	"	"	"
4	B	"	"	"	STOCKI-NET	"	"	"	"	"
5	D	0	"	"	KNIT-IN	"	"	"	"	"
6	B	"	"	"	STOCKI-NET	"	"	"	"	"
7	A		"	"	KNIT-IN	"	"	"	"	"
8	B	"	"	"	STOCKI-NET	"	"	"	"	"
9	C	0	"	"	KNIT-IN	"	"	"	"	"
10	B	"	"	"	STOCKI-NET	"	"	"	"	"
11	D		"	"	KNIT-IN	"	"	"	"	"
12	B	"	"	"	STOCKI-NET	"	"	"	"	"

A=Navy blue B=White C=Pink D=Green (1 pattern consists of 4 stitches and 12 rows.)



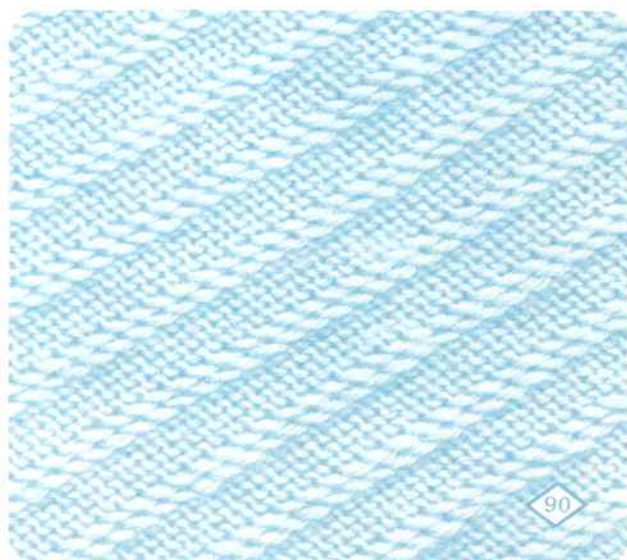
ORDER	PATTERN PANEL			CAM LEV	PUSH BUTTONS		PATTERN LEV	ROWS DIR.
	↓	○	○		2 1	1 2		
1	0	8	1	KNIT-IN	■	■	•	→
2	1	"	3	"	"	"	PICK	"
3	"	"	"	STOCK-NET	"	"	"	→
4	4	"	1	KNIT-IN	"	"	•	→
5	3	"	3	"	"	"	PICK	"
6	"	"	"	STOCK-NET	"	"	"	→

[1 pattern consists of 8 stitches and 10 rows.]



ORDER	PATTERN PANEL			CAM LEV	PUSH BUTTONS		PATTERN LEV	ROWS DIR.
	↓	○	○		2 1	1 2		
1	4	8	1	KNIT-IN	■	■	•	←
2	3	"	"	"	"	"	"	→
3	2	"	"	"	"	"	"	→
4	1	"	"	"	"	"	"	→
5	0	"	"	"	"	"	"	→
6	1	"	"	"	"	"	"	→
7	2	"	"	"	"	"	"	→
8	3	"	"	"	"	"	"	→

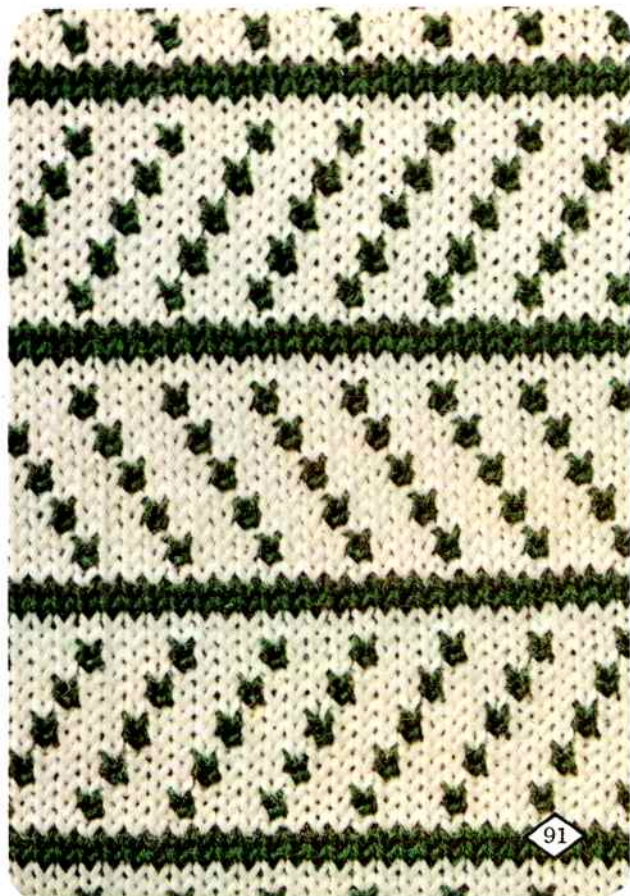
[1 pattern consists of 8 stitches and 8 rows.]



ORDER	CON. COLOR	PATTERN PANEL			CAM LEV.	PUSH BUTTONS		PATTERN LEV.	# ROWS DIR.
									
1	A	4 	•	4	STOCKI-NET			•	
2	B	"	"	"	"	"	"	"	"
3	A	"	"	"	KNIT-IN	"	"	"	"
4	B	"	"	"	STOCKI-NET	"	"	"	"
5	A	3 	"	"	KNIT-IN	"	"	"	"
6	B	"	"	"	STOCKI-NET	"	"	"	"
7	A	2 	"	"	KNIT-IN	"	"	"	"
8	B	"	"	"	STOCKI-NET	"	"	"	"
9	A	1 	"	"	KNIT-IN	"	"	"	"
10	B	"	"	"	STOCKI-NET	"	"	"	"
11	A	0	"	"	KNIT-IN	"	"	"	"
12	B	"	"	"	STOCKI-NET	"	"	"	"
13	A	"	"	"	"	"	"	"	"
14	B	"	"	"	"	"	"	"	"
15	A	"	"	"	KNIT-IN	"	"	"	"
16	B	"	"	"	STOCKI-NET	"	"	"	"
17	A	1 	"	"	KNIT-IN	"	"	"	"
18	B	"	"	"	STOCKI-NET	"	"	"	"
19	A	2 	"	"	KNIT-IN	"	"	"	"
20	B	"	"	"	STOCKI-NET	"	"	"	"
21	A	3 	"	"	KNIT-IN	"	"	"	"
22	B	"	"	"	STOCKI-NET	"	"	"	"
23	A	4 	"	"	KNIT-IN	"	"	"	"
24	B	"	"	"	STOCKI-NET	"	"	"	"

A = Green B = White

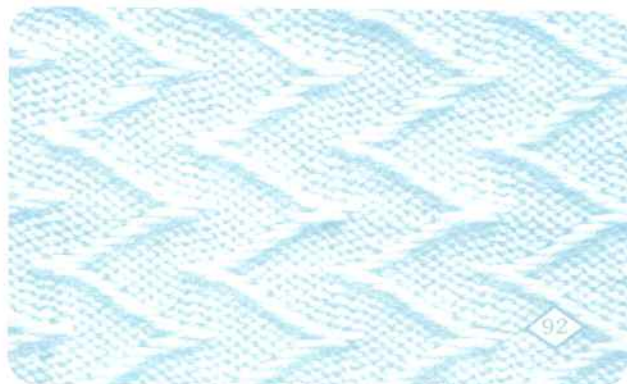
(1 pattern consists of  
4 stitches and 48 rows.)





ORDER	PATTERN PANEL		CAM LEV	PUSH BUTTONS		PATTERN LEV	= ROWS DIR.
	1	2		21	12		
1	4	8	2	ENTR		*	←
2	3	*	*			*	→
3	2	*	*			*	←
4	1	*	*			*	→
5	0	*	*			*	←
6	[P1]	*	*			*	→
7	[P2]	*	*			*	←
8	[P3]	*	*			*	→
9	[P2]	*	*			*	←
10	[P1]	*	*			*	→
11	0	*	*			*	←
12	1	*	*			*	→
13	2	*	*			*	←
14	3	*	*			*	→

(1) pattern consists of 8 stitches and 14 rows.



92

ORDER	PATTERN PANEL		CAM LEV	PUSH BUTTONS		PATTERN LEV	= ROWS DIR.
	1	2		21	12		
1	4	8	1			PICK	↔
2	3	*	*			*	↔
3	2	*	*			*	↔
4	1	*	*			*	↔
5	0	*	*			*	↔
6	[P1]	*	*			*	↔
7	[P2]	*	*			*	↔
8	[P3]	*	*			*	↔
9	[P2]	*	*			*	↔
10	[P1]	*	*			*	↔
11	0	*	*			*	↔
12	1	*	*			*	↔
13	2	*	*			*	↔
14	3	*	*			*	↔

(2) pattern consists of 8 stitches and 28 rows.



93